

Outlook on Florida's Coastal Dredging Projects Workshop

Panama City Beach, Florida

February 5, 2025



SE Jupiter Inlet Maintenance Dredging

Local Sponsor: Jupiter Inlet District

Contact: Taylor Engineering

Anticipated Bids: January 2025 & Jan. 2026

Anticipated Construction: May 2025 & May 2026

Fill Placement: R14-R16 Palm Beach County

Sand Source: Jupiter Inlet Sand Trap

Anticipated CYD: 80,000

Anticipated Dredge Equipment: Cutterhead

Approx Water Depths: >21.5'

Approx Distance to Discharge: 3,500'

Notes: Beach placement operations and equipment demobilized from beach by April 30



SW Region

Captiva Island

Local Sponsor: CEPD

Contact: APTIM

Anticipated Bid: January 2024?

Anticipated Construction: May-July 2025

Fill Placement: R94-R109 Lee County

Sand Source: Offshore

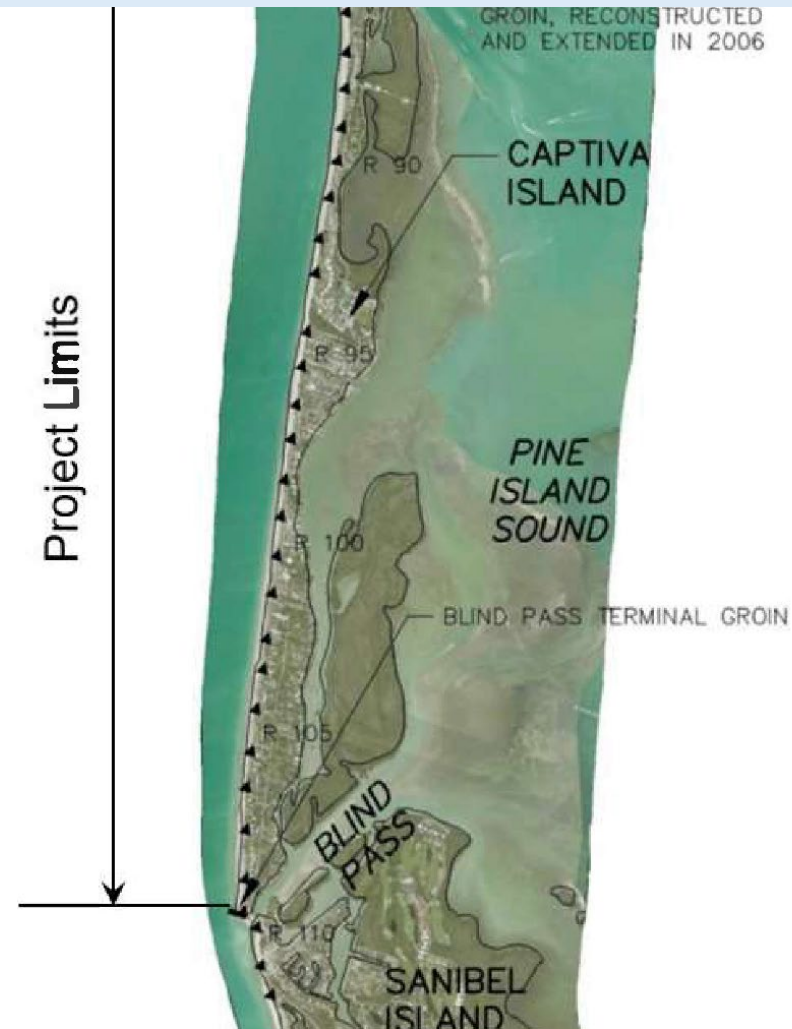
Anticipated CYD: 1.182M

Anticipated Dredge Equipment: Hopper

Approx Water Depths: 40'

Approx Distance to Discharge: TBD

Notes: no restricted pipeline corridors; turtle monitoring and relocation



NW

Pensacola Beach Renourishment

Local Sponsor: Santa Rosa Island Authority

Contact: Foth | Olsen

Anticipated Bid: February 2025

Anticipated Construction: November 2025

Fill Placement: R-107.5 - R-150.5 Escambia County

Sand Source: Offshore

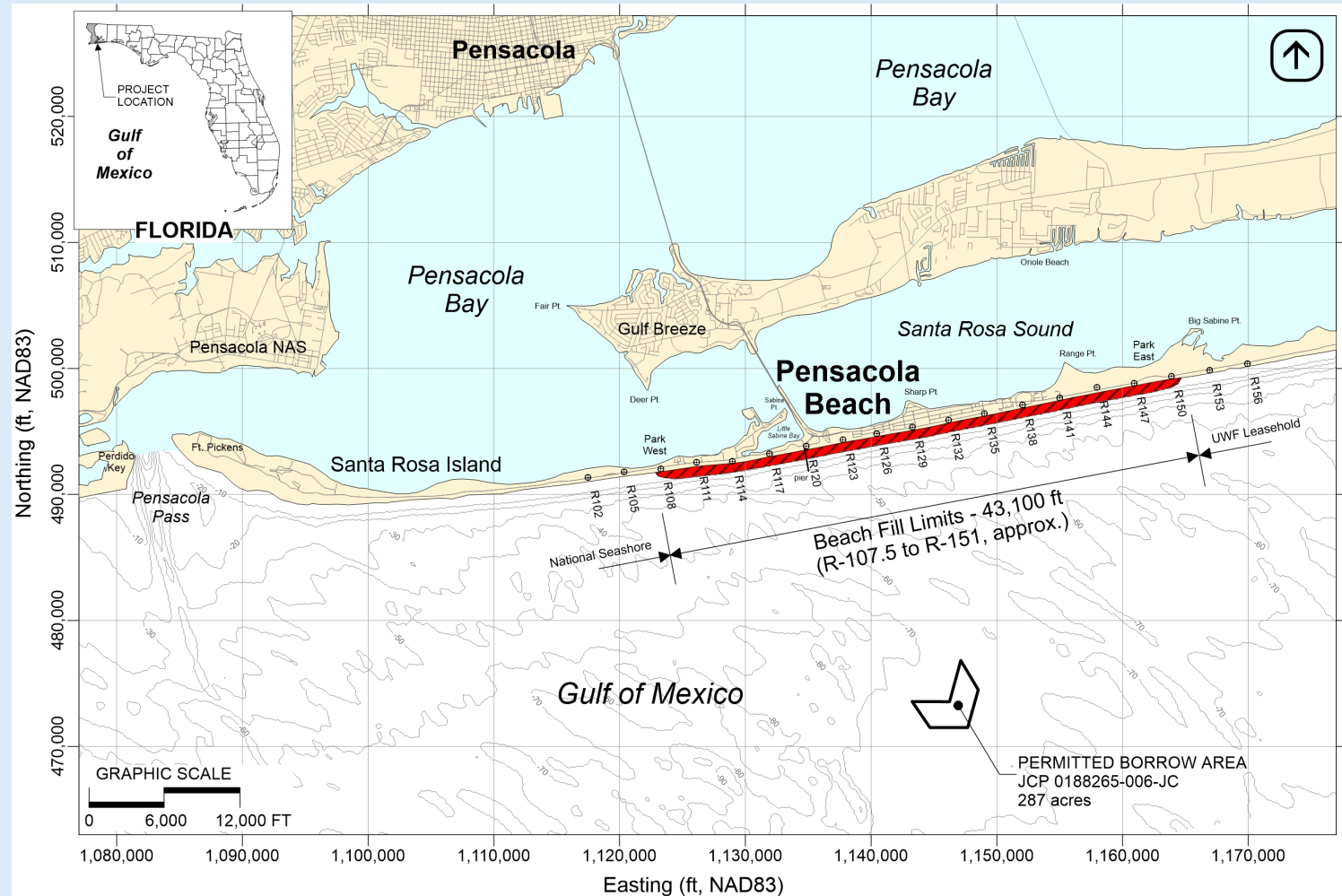
Anticipated CYD: 1.6M

Anticipated Dredge Equipment: Hopper

Approx Water Depths: 60' – 80'

Approx Distance to Discharge: 4 miles

Notes: No work in the summer



East Central Dune Restoration South of Ponce Inlet

Local Sponsor: Volusia County

Contact: Intera, Mike Trudnak

Anticipated Bid: Feb. 2025

Anticipated Construction: May 2025

Fill Placement: R-160 to R-190

Sand Source: MSA 434-S DMMA

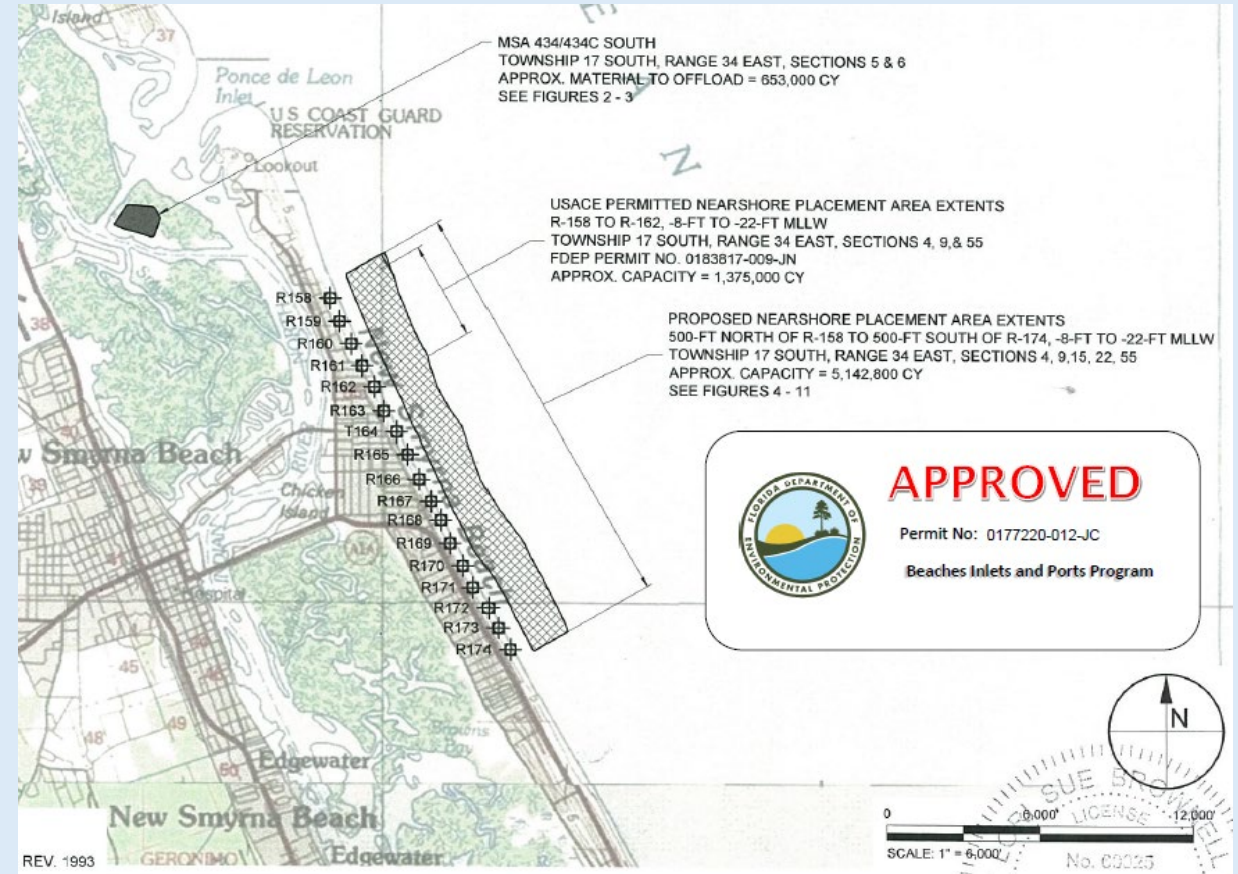
Anticipated CYD: 500,000 CY

Anticipated Dredge: Cutter

Approx Water Depths: NA

Approx Distance to Discharge: 3 to 8 miles

Notes: Hydraulic offloading of the MSA 434 - S DMMA onto the beach in New Smyrna Beach. The DMMA currently holds approximately 500,000 cubic yards of beach compatible sand.



NW

Western Destin Beach Restoration FEMA Cat. G

Local Sponsor: Okaloosa County

Contact: Taylor Engineering

Anticipated Bid: March 2025

Anticipated Construction: November 2025

Fill Placement: R17 to R20.5; R23.5 to R25.5
Okaloosa County

Sand Source: Offshore

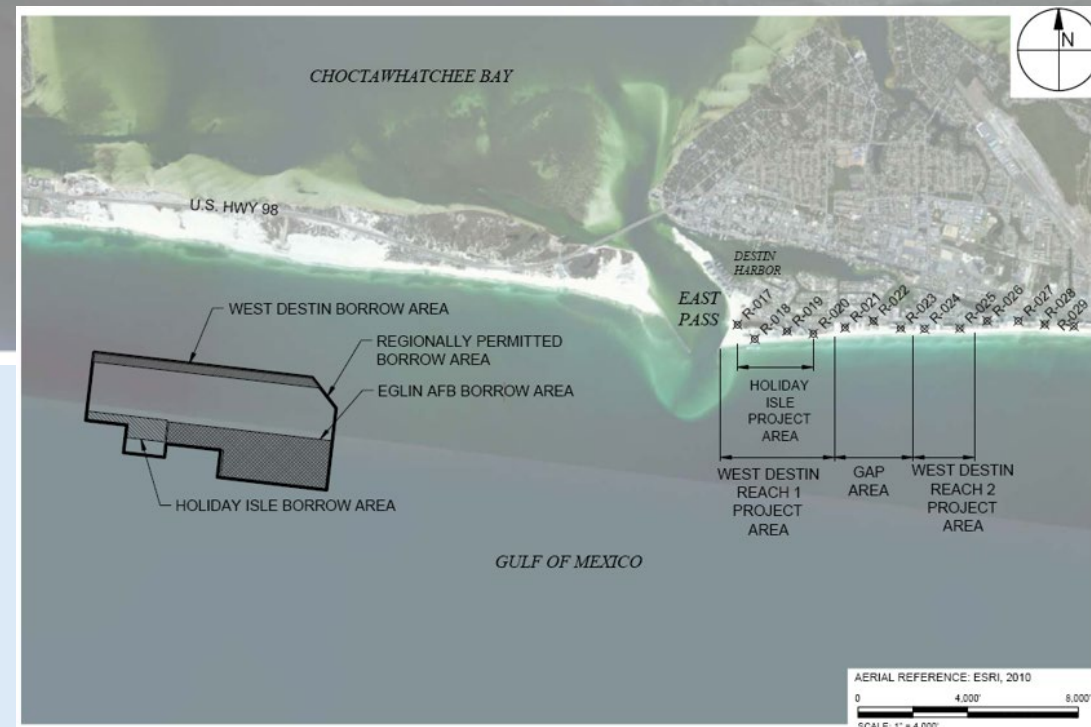
Anticipated CYD: 150,600

Anticipated Dredge Equipment: Cutter/Hopper

Approx Water Depths: 40' – 50'

Approx Distance to Discharge: 4 mi

Notes: Nov. through April only. Required pipeline corridors. 500-meter turbidity mixing zone at beach. Screening required.



SW Pinellas County Beach Renourishment

Local Sponsor: Pinellas County

Contact: APTIM

Anticipated Bid: April 2025

Anticipated Construction: May 2025

Fill Placement: R-56 to R-66; R-71 to R-108A; R-126 to R-128A; R-136 to R-142; R-144 to R-146 Pinellas Co.

Sand Source: John's Pass, Blind Pass, Pass-A-Grille, and Egmont Shoals Borrow Areas

Anticipated CYD: 2.2M

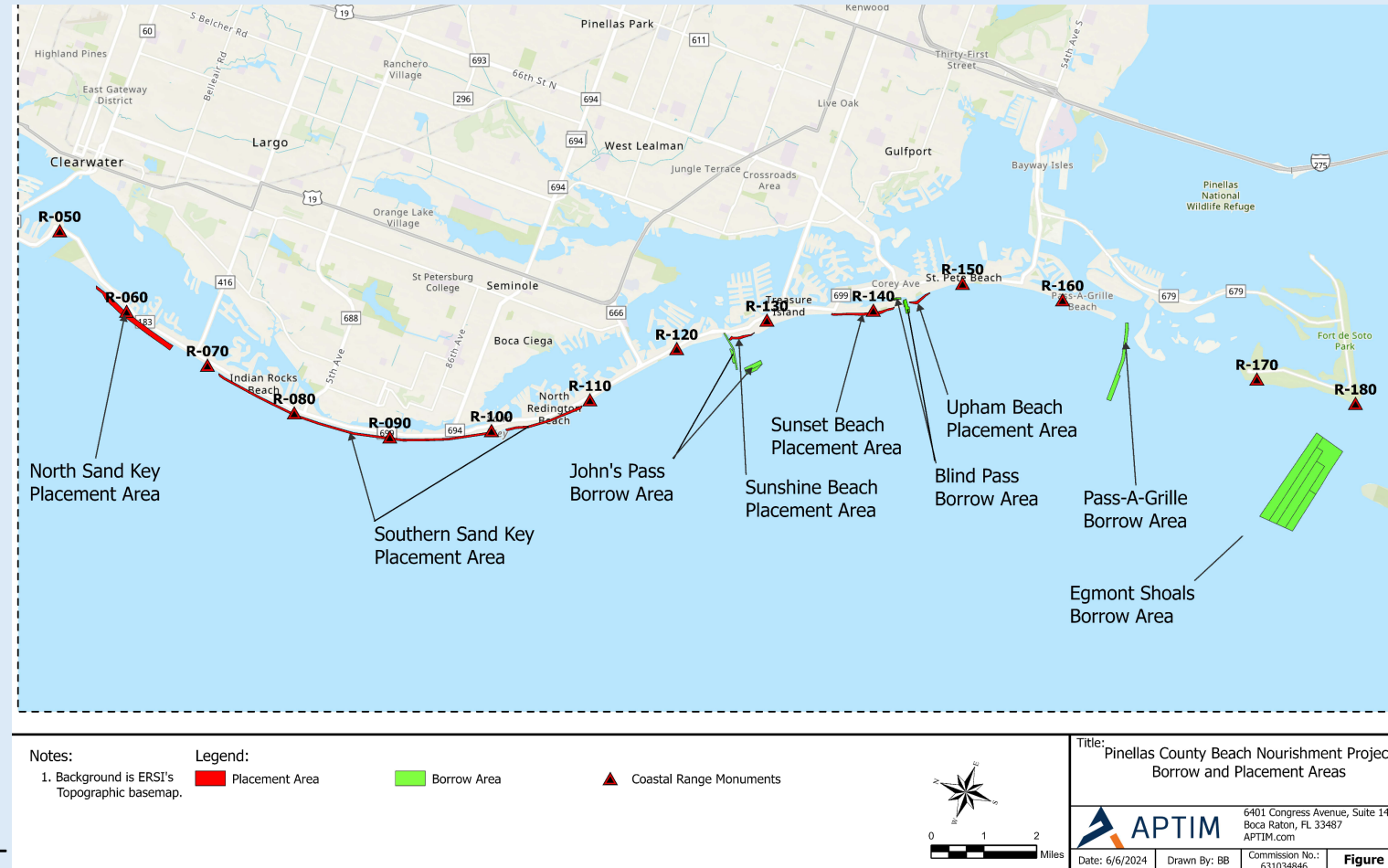
Anticipated Dredge Equipment: Cutterhead/Clamshell

Approx Water Depths: 10' – 30'

Approx Distance to Discharge: 0.25 to 21 nautical miles

Notes: Required pipeline corridors. Hardbottom with 300-foot buffer. Sea turtle and smalltooth sawfish conditions.

May be advertised as two projects, dependent on timeline and constructability.



NE

Flagler County Dune and Beach Restoration – Reach II

Local Sponsor: Flagler County

Contact: Foth | Olsen

Anticipated Bid: May 2025

Anticipated Construction: July 2025

Fill Placement: R45 – R77 Flagler County

Sand Source: Offshore

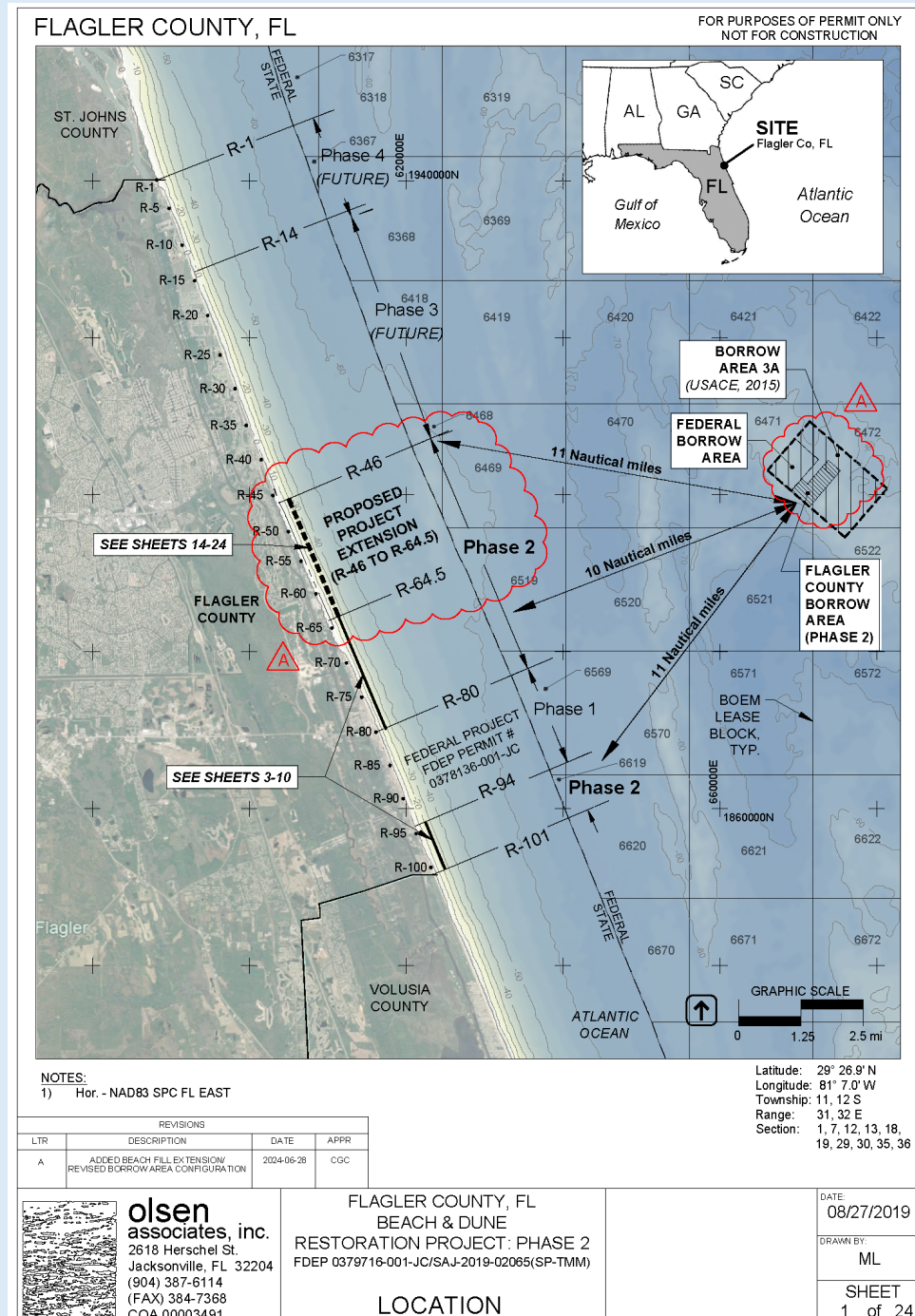
Anticipated CYD: 1.8M

Anticipated Dredge Equipment: Hopper

Approx Water Depths: 50' – 65'

Approx Distance to Discharge: 12 mi

Notes: MEC screening; seawalls at 30% of properties; public and private walkovers



NW St. Joseph Peninsula Beach Renourishment & Coastal Structures Project

Local Sponsor: Gulf County

Contact: MRD Associates, Inc.

Anticipated Bid: May/June 2025

Anticipated Construction: August 2025

Fill Placement: R-100 - R-105.8 Gulf County

Sand Source: Offshore

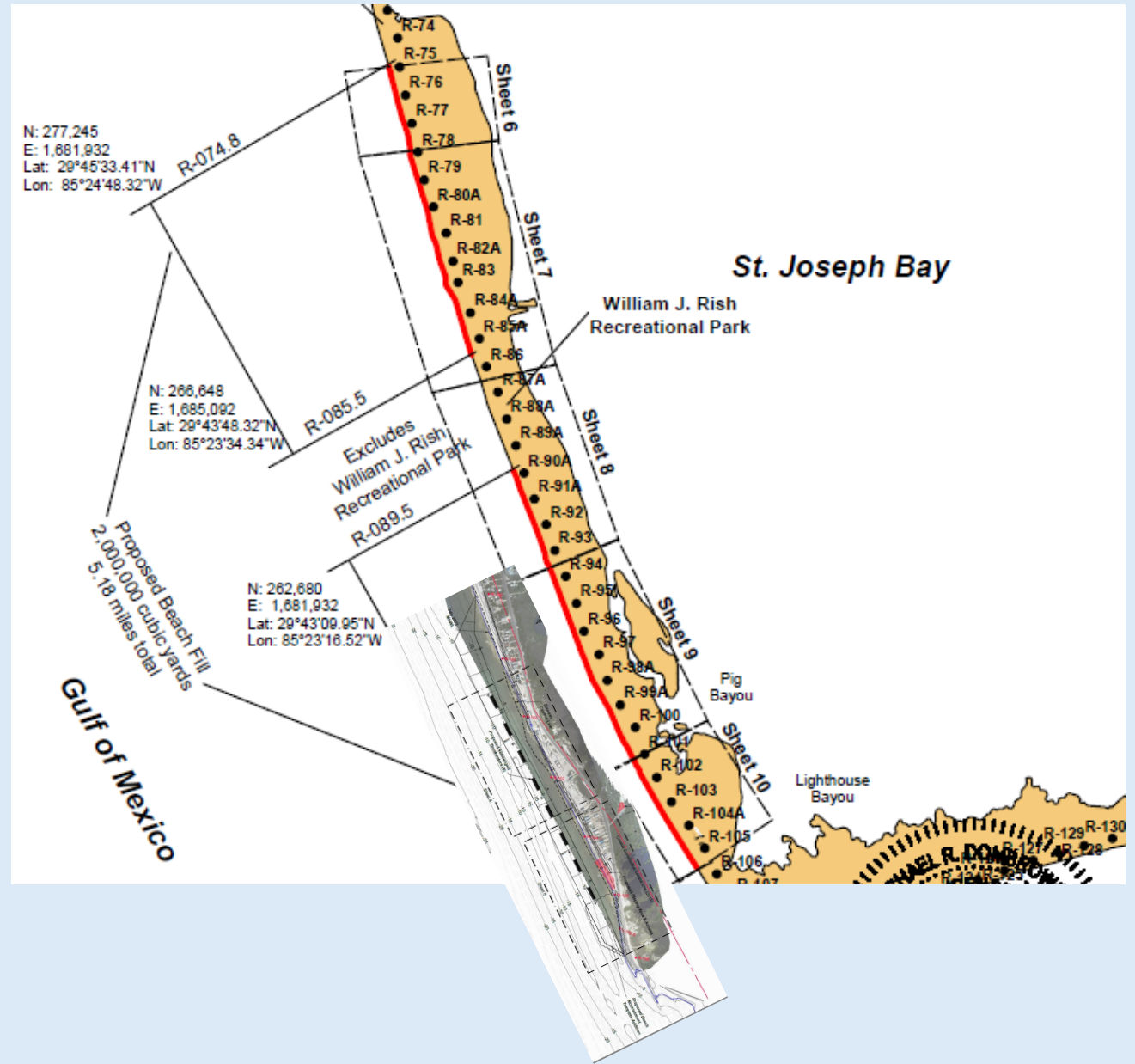
Anticipated CYD: 800,000

Anticipated Dredge Equipment: Hopper

Approx Water Depths: 30' - 40'

Approx Distance to Discharge: 9 miles

Notes: No construction during peak marine turtle nesting season; Seawalls/upland retaining walls within landward limits of fill; Construction of eight submerged breakwaters



CE

Indian River County Sector 5 Beach

Local Sponsor: Indian River County

Contact: APTIM

Anticipated Bid: June 2025

Anticipated Construction: Nov 2025

Fill Placement: R70 – R86 Indian River County

Sand Source: Upland

Anticipated CYD: 150,000

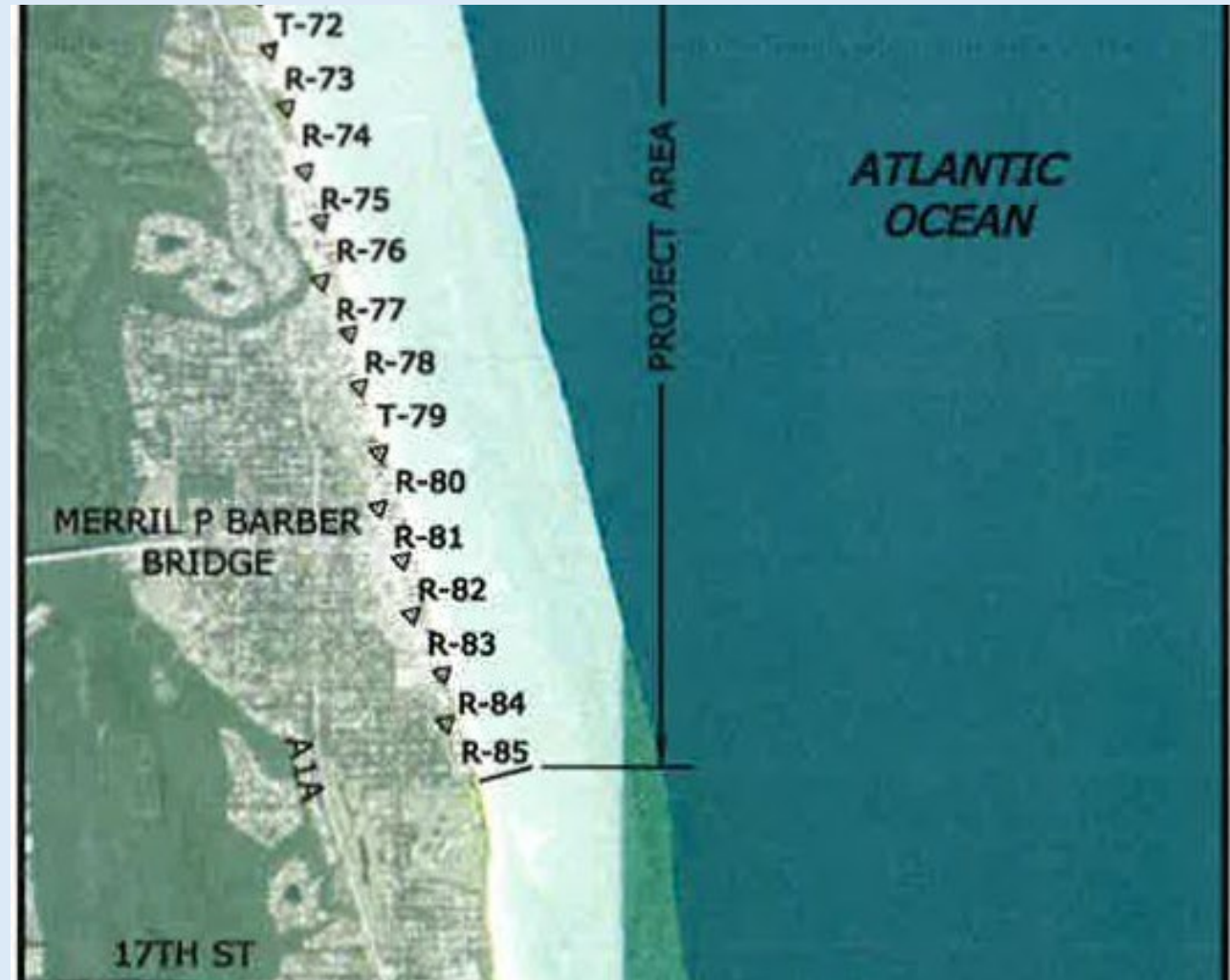
Anticipated Dredge Equipment: N/A

Approx Water Depths: N/A

Approx Distance to Discharge: N/A

Notes: Nov thru April construction timeframe. Not permitted for offshore sand source.

Some seawalls and easements not executed - properties not participating. Project slated to address Hurricanes Ian and Nicole sand losses and background erosion since last nourishment.



NE South Ponte Vedra Beach, FEMA Cat G

Local Sponsor: St. Johns County

Contact: First Line Coastal

Anticipated Bid: August 2025

Anticipated Construction: December 2025

Fill Placement: R-76 to R-102.5 St. Johns County

Sand Source: Offshore

Anticipated CYD: 1M

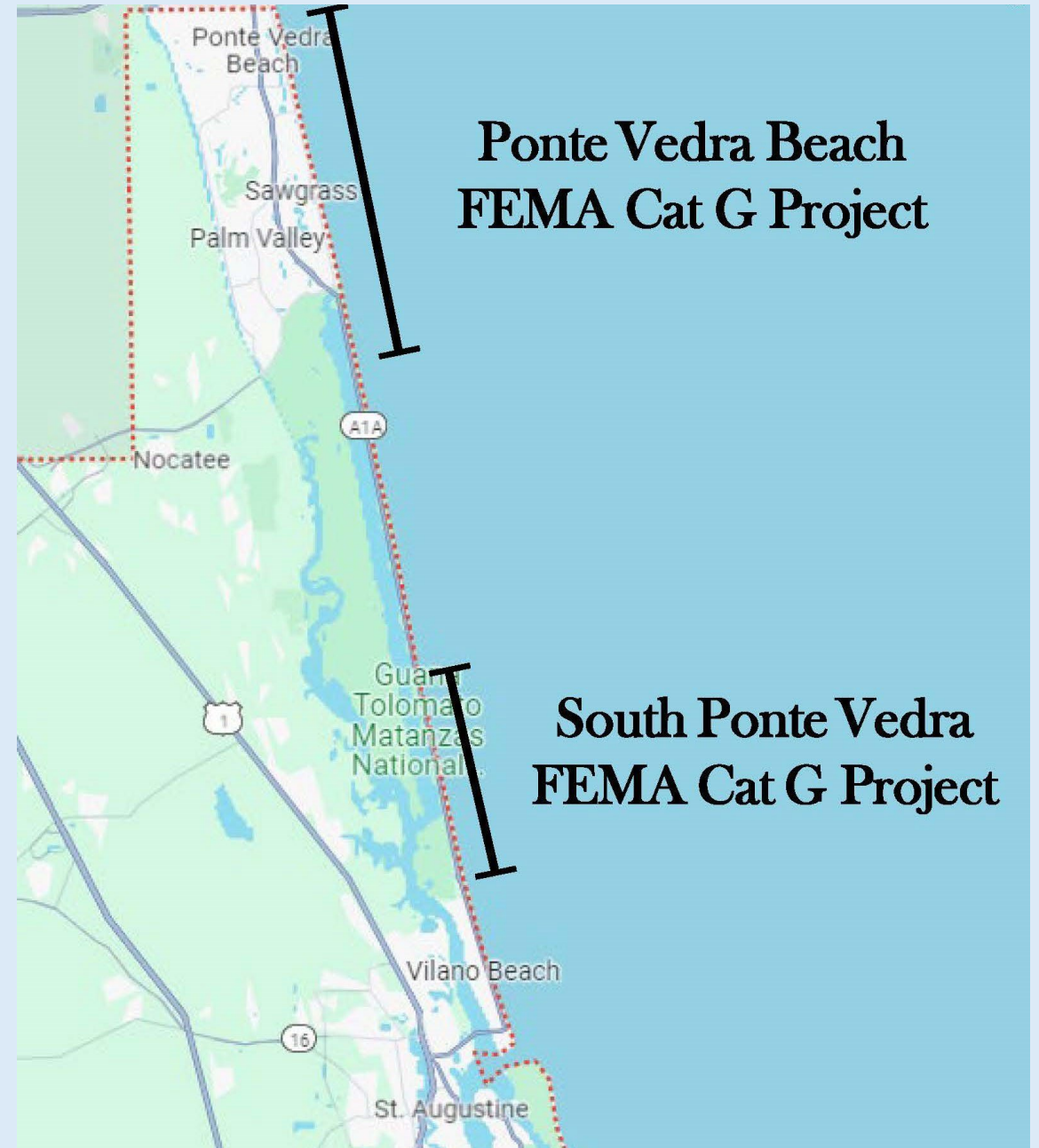
Anticipated Dredge: Hopper

Approx Water Depths: 40' – 53'

Approx Distance to Discharge: 9.5 miles

Notes: Mechanical Screening for MEC, Turtle and Right Whale season, OFW turbidity restrictions

Seawalls and dune walkovers throughout project footprint



SW

Coquina Beach Restoration Project

Local Sponsor: Manatee County

Contact: Coastal Protection Engineering

Anticipated Bid: August/Sept 2025

Anticipated Construction: November 2025

Fill Placement: R36-R41 Manatee County

Sand Source: Longboat Pass

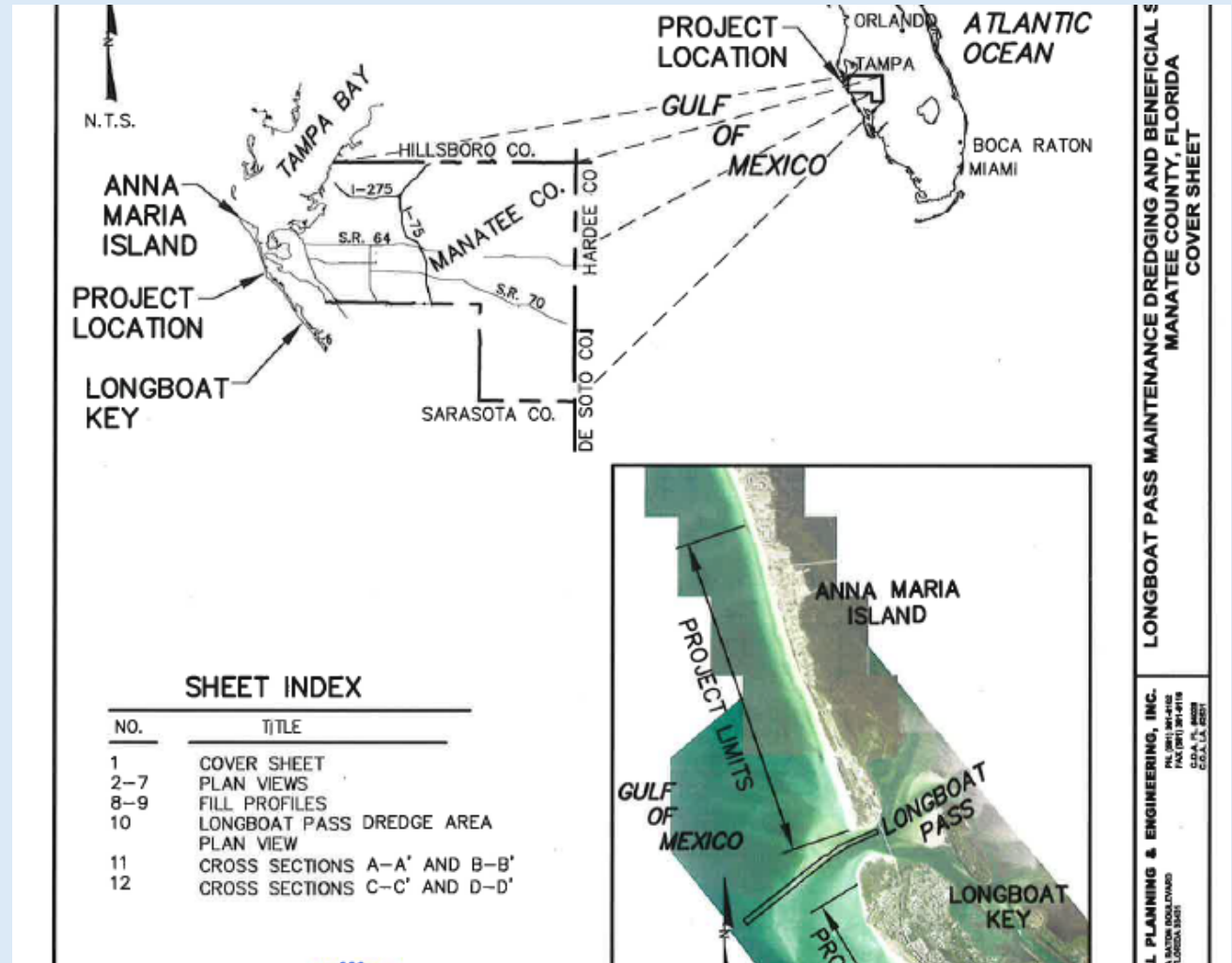
Anticipated CYD: 63,450 CY

Anticipated Dredge Equipment: Cutterhead

Approx Water Depths: 13'

Approx Distance to Discharge: 3,000'

Notes: Borrow area investigations are ongoing to determine volume of sand available; groins in fill area; FEMA EHP review



SE

South Lake Worth Inlet Sand Trap Expansion

Local Sponsor: Palm Beach County

Contact: Coastal Protection Engineering

Anticipated Bids: September 2025

Anticipated Construction: January 2026

Fill Placement: Inshore

Sand Source: Inlet Sand Trap

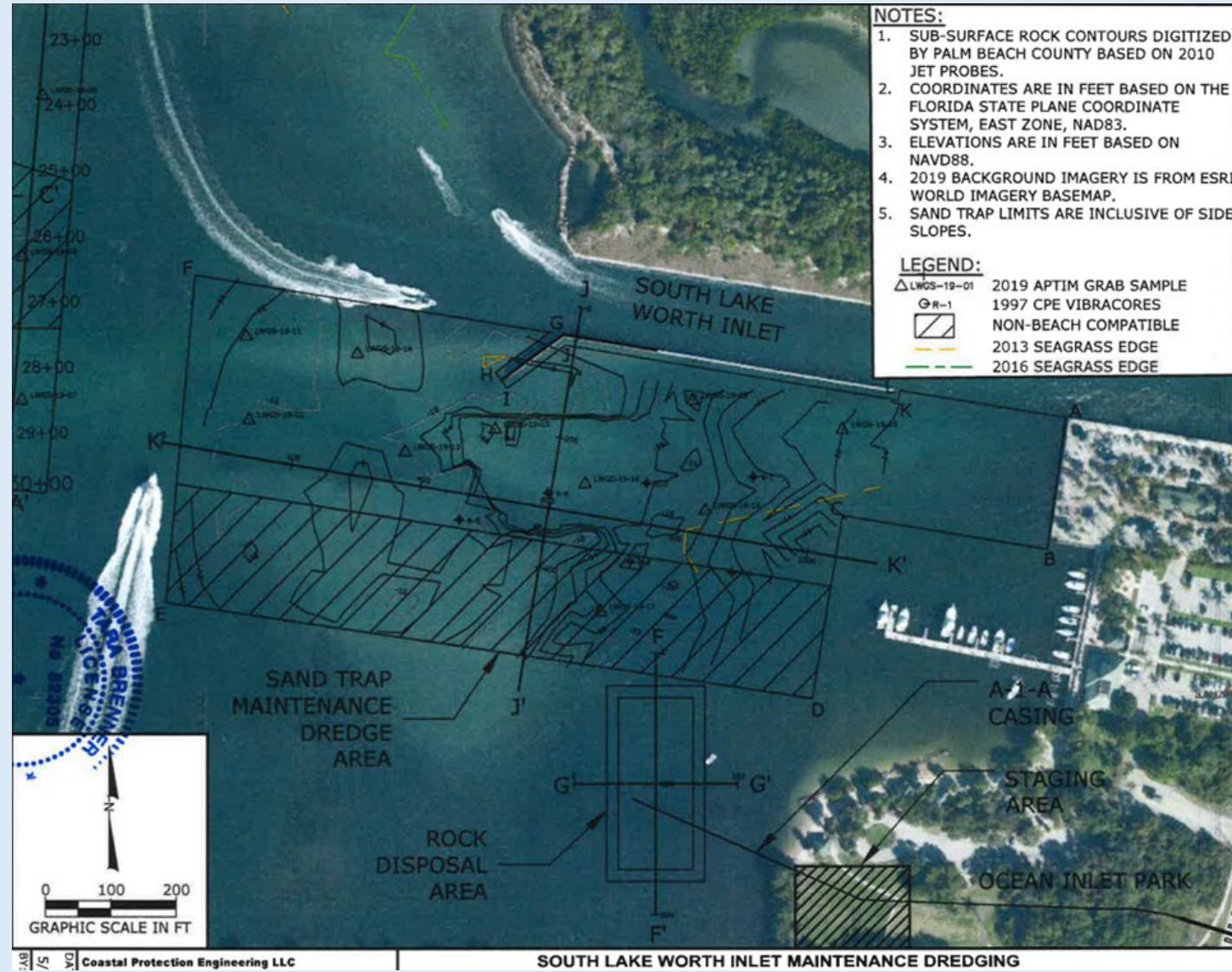
Anticipated CYD: 115,000

Anticipated Dredge Equipment: Hard Rock
Excavator(s)/Punch

Approx Water Depths: 5' – 18'

Approx Distance to Discharge: 3.5 – 10 miles

Notes: No blasting. Hard rock excavation anticipated, contractor with demonstrated experience required. Beneficial reuse/placement of dredge material in LWL.



SW

South Siesta Key Beach

Local Sponsor: Sarasota County

Contact: Joseph Kraus/ Consultant - TBD

Anticipated Bid: Late 2025

Anticipated Construction: Spring or Fall 2026

Fill Placement: R67-R77 Sarasota County

Sand Source: Offshore or Upland

Anticipated CYD: Storm damage repair plus maintenance sand up to $\pm 500,000$ CY

Anticipated Dredge Equipment: Truck Haul or Hopper

Approx Water Depths: 38' to 47' if Hopper

Approx Distance to Discharge: 6.2 to 8.7 mi.

Notes: Preferred window outside of sea turtle nesting season. Hopper: Screening may be required. Truck haul: Spring break conflicts are likely.



SW

Manasota Key Beach

Local Sponsor: Sarasota County

Contact: Joseph Kraus / Consultant TBD

Anticipated Bid: Late 2025

Anticipated Construction: Spring or Fall 2027

Fill Placement: R171-R183 Sarasota County

Sand Source: Upland

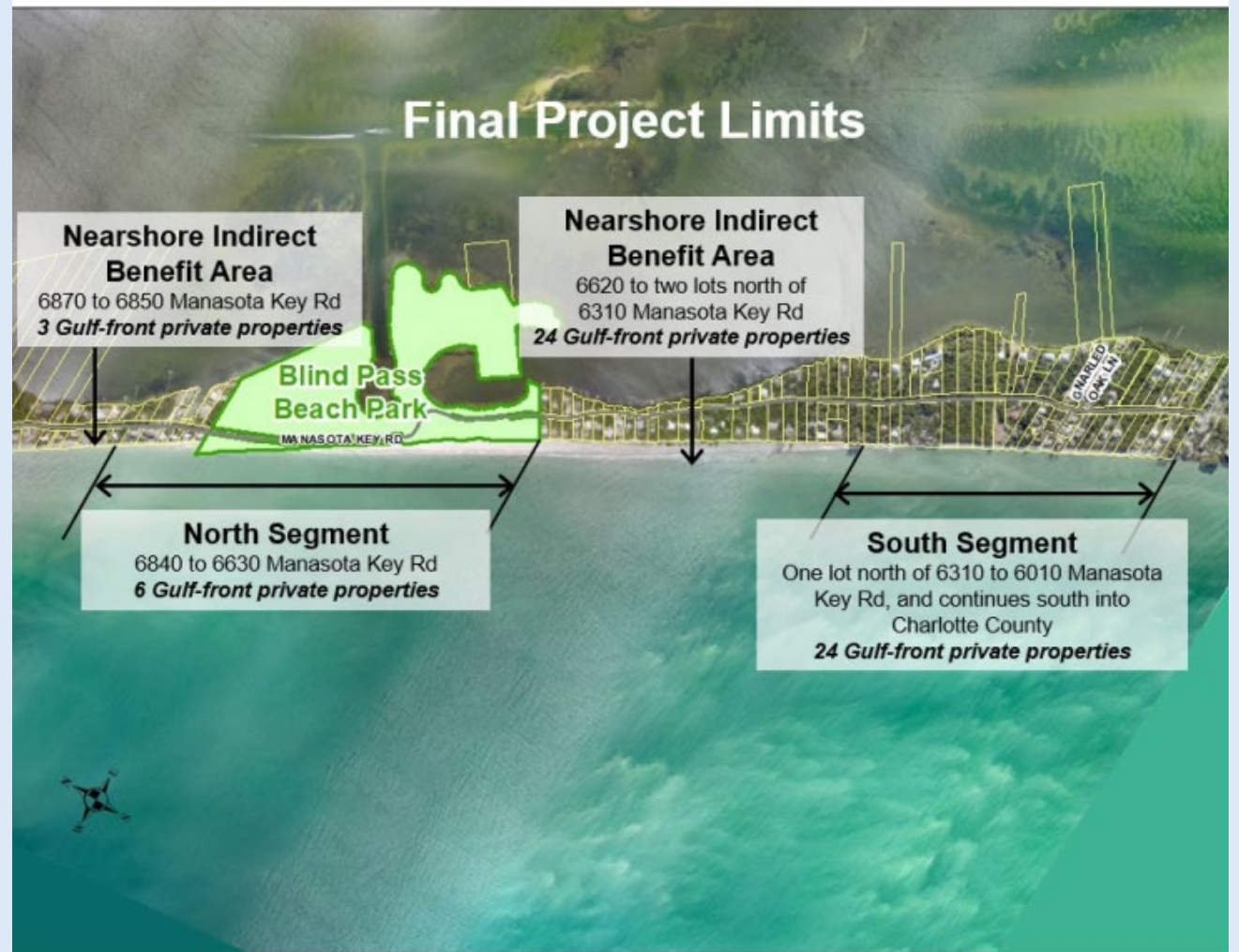
Anticipated CYD: Storm damage repair plus maintenance sand up to $\pm 250,000$ CY

Anticipated Dredge Equipment: Truck Haul

Approx Water Depths: N/A

Approx Distance to Discharge: N/A

Notes: Preferred window outside of sea turtle nesting season. Possible Spring Break conflicts.



SE North County Comprehensive Shore Protection Project Segments 2 and 3

Local Sponsor: Palm Beach County

Contact: Foth | Olsen

Anticipated Bids: March 2026

Anticipated Construction: November 2026

Fill Placement: R19 – R38, Palm Beach County

Sand Source: Offshore

Anticipated CYD: 234,000 for Seg 2; 610,000 for Seg 3

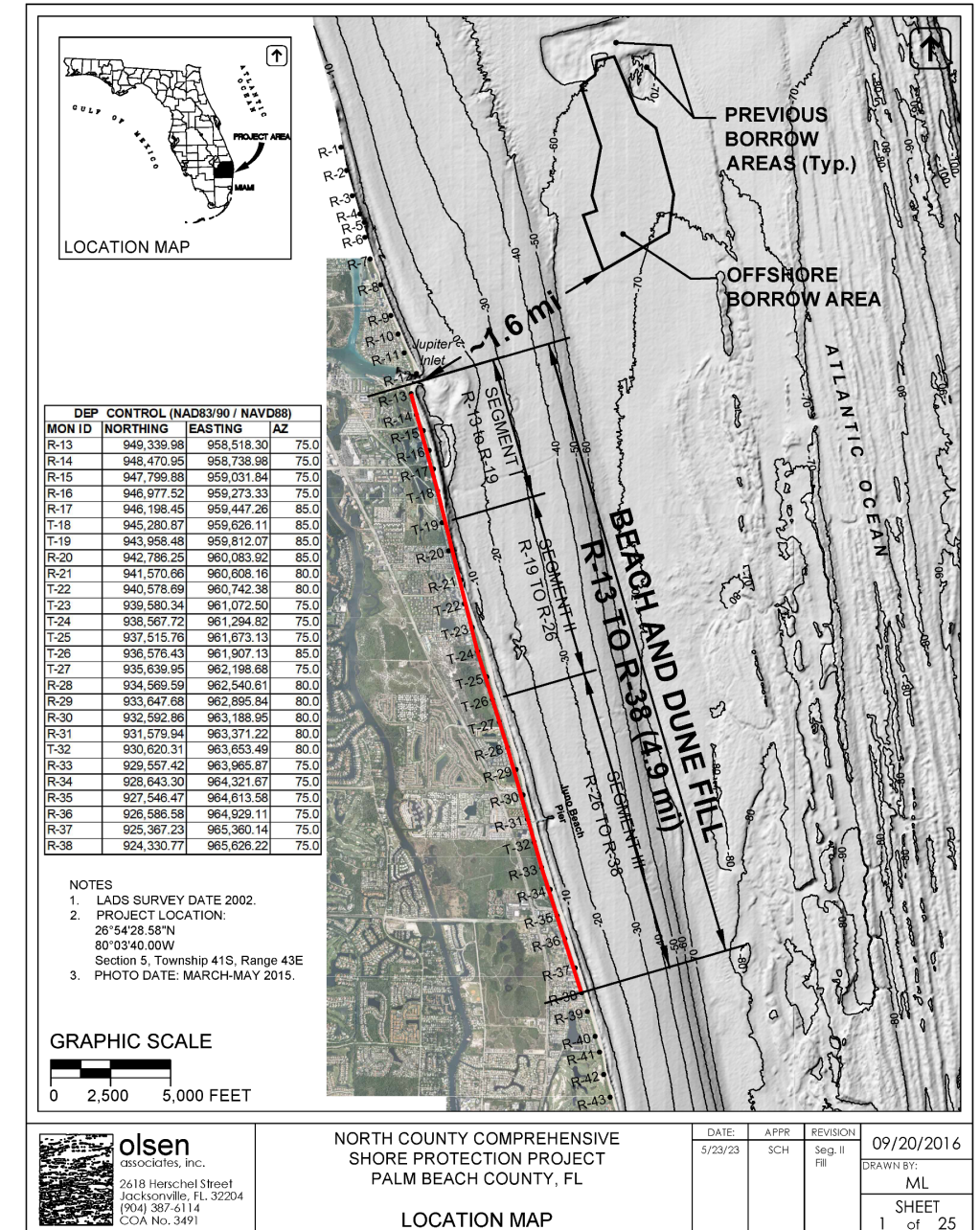
Anticipated Dredge Equipment: Trailing Suction Hopper Dredge

Approx Water Depths: 64' – 72'

Approx Distance to Discharge: 2.3 – 5.7 miles

Notes: Nov. thru March w/ add. approval required for April. 200m by 1000 m turbidity mixing zone. Vibratory screening required.

Screened shell content $\geq 1\%$ of dredge volume; offsite hauling of screened shell required.



NE Ponte Vedra Beach FEMA Cat G

Local Sponsor: St. Johns County

Contact: Steve Hammond, Consultant TBD

Anticipated Bid: TBD

Anticipated Construction: 2026

Fill Placement: R-1 to R-46.2 St. Johns County

Sand Source: Offshore/Upland

Anticipated CYD: TBD

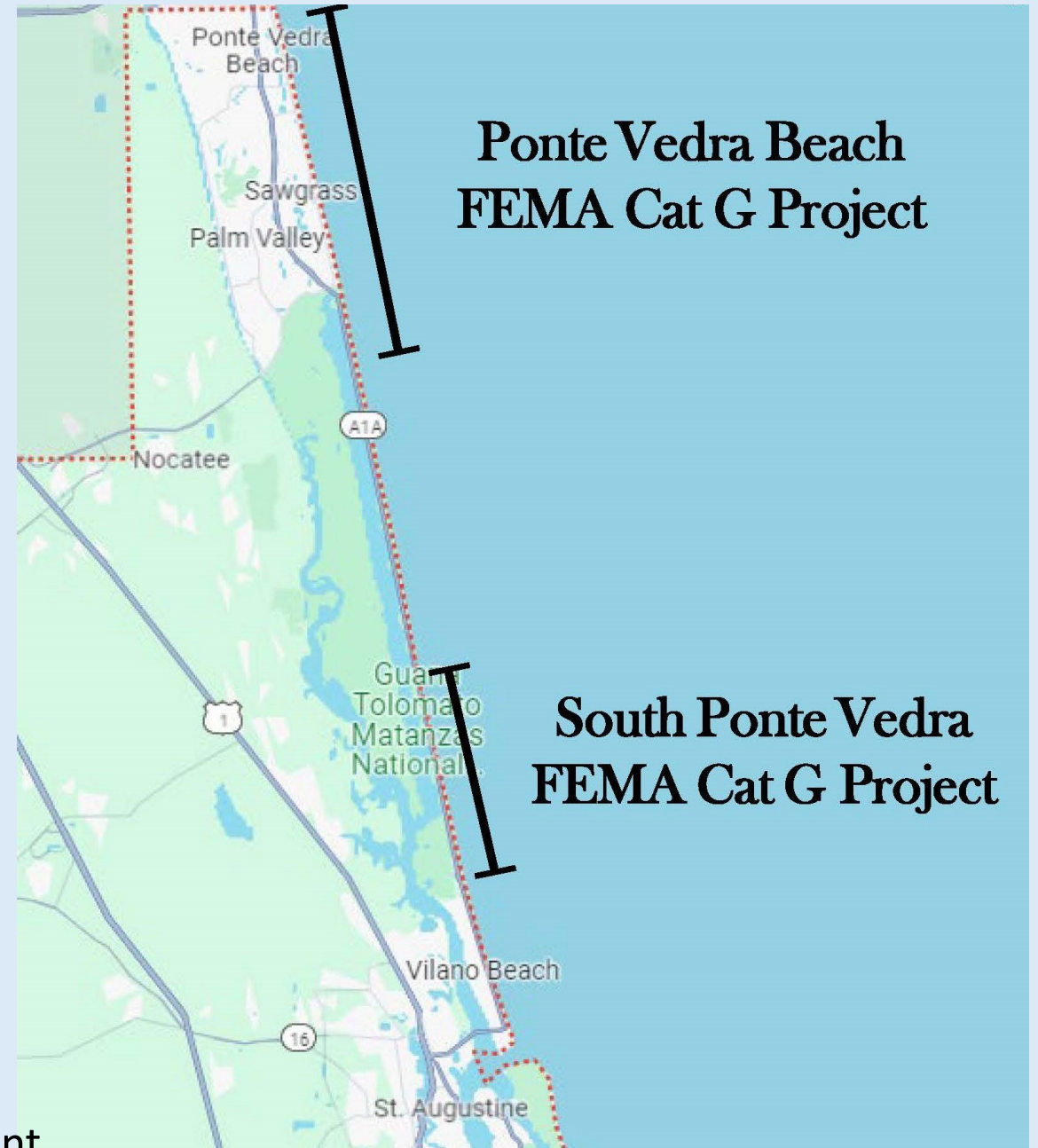
Anticipated Dredge: Hopper/Truck Haul

Approx Water Depths: TBD

Approx Distance to Discharge: 4.5 miles

Notes: Mechanical Screening for MEC, Turtle and Right Whale season, OFW turbidity restrictions

Seawalls, Geotubes, and dune walkovers in project footprint



		Project Name	Local Sponsor	Consultant	Anticipated Bid Solicitation Date	Anticipated Construction Commencement	Fill R- Monuments	Sand Source	Anticipate Cubic Yardage	Expected Dredge/Equipment Type	Approximate Min and Max Water Depths of Dredge Operation	Approximate Distance from Source to Discharge	Known Environmental Windows or other Project Limitations	Notes
1	SE	2025 Jupiter Inlet Sand Trap Dredging	Jupiter Inlet District	Taylor Engineering	2025-01-01	Mar-25	R-14 - R-16 (Palm Beach Co. R-mons)	Jupiter Inlet sand trap	80,000 cy	hydraulic suction cutterhead	21.5'	3,500'	Beach placemtn operations and equipment demobilized from beach by April 30	pay in the cut, clean medium sand
2	SW	Captiva Island	CEPD	APTIM, Nicole Sharp	2024-01-01	May 1 - July 1, 2025	R-84 to R-109	Offshore	1,182,000	Hopper	Approx. 40'	7 miles	Sea turtle monitoring and nest relocations required during nesting season; no restricted pipeline corridors	n/a
3	SW													
4	NW	Pensacola Beach Renourishment	Santa Rosa Island Authority, Juan Lemos	Foth Olsen, Krista Egan	2025-02-01	Nov-25	R-107.5 to R-150.5	Offshore	1,600,000 cy	Hopper	60' to 80'	4 miles	No work in the summer	n/a
5	E	Dune Restoration south of Ponce Inlet	Volusia County, Niles Cyzycki	Intera, Mike Trudnak	2025-02-01	May-25	R-160 to R-190	Florida Inland Navigation District MSA 434-S DMMA	500,000 CY	Cutter	NA	3 to 8 Miles	N/A.	Hydraulic offloading of the MSA 434 - S DMMA onto the beach in New Smyrna Beach. The DMMA currently holds approximatley 500,000 cubic yards of beach compatible sand.
6	NW	Western Destin Beach Restoration	Okaloosa County, Alex Fogg Natural Resources Chief	Taylor Engineering, Duncan Greer	2025-03-01	Nov-25	R-17 - R-20.5 R-23.5 - R25.5	Offshore Regionally Permitted Borrow Area	150,600 cy	Cutter / Hopper	40' - 50'	~ 4 miles	Nov. through April only. Required pipeline cooridors. 500 meter turbidity mixing zone at beach. Screening required.	FEMA Category G Hurricane Sally
7	SW	Pinellas County Beach Renourishment	Pinellas County	APTIM, Jacob Rice	April. 2025	May. 2025	R-56 to R-66; R-71 to R-108A; R-126 to R-128A; R-136 to R-142; R-144 to R-146	John's Pass, Blind Pass, Pass-A-Grille, and Egmont Shoals Borrow Areas	2,200,000 cy	Cutterhead; Clamshell	10' to 30'	From ~0.25 to ~21 nautical miles	Required pipeline cooridors. Hardbottom with 300 foot buffer required. Sea turtle and smalltooth sawfish conditions.	Reourishment may be advertised as two projects, dependent on timeline and constructability.
8	NE	Flagler County Dune and Beach Restoration Project - Reach II	Flagler County, Ansley Wren-Key	Foth Olsen LLC	2025-05-01	Jul-25	R45 - R77	offshore	1,800,000 cy	hopper	50'-65'	~ 12 miles	MEC screening	seawalls at ~30% of properties; numerous public and private walkovers
9	NW	St. Joseph Peninsula Beach Renourishment and Coastal Structures Project	Gulf County	MRD Associates, Inc.	May/Jun-25	Aug-25	R-100 to R-105.8	Offshore	800,000 cy	Hopper	30' to 40'	~9 miles	Currently restricted from construction during peak marine turtle nesting season	Multiple seawalls/upland retaining walls within landward limits of fill, includes construcion of eight submerged breakwaters
10	CE	Vero Beach Sector 5	Indian River County, Eric Charest	APTIM, Nicole Sharp	2025-06-01	Nov-25	R70-R86	Upland	150,000 cy	N/A	N/A	N/A	November through April construction timeframe only. Not currently permitted for offshore sand source.	Some seawalls, some easements not currently executed - properties not participating. Project slated to address Hurricanes Ian and Nicole sand losses and background erosion experienced since out last nourishment event.
11	NE	South Ponte Vedra FEMA Cat G Project	St Johns County	First Line Coastal	2025-08-01	Dec-25	R-76 to R-102.5	Offshore	1,000,000 cy	Hopper	40' to 53'	9.5 Miles	Mechanical Screening for MEC, Tuttle Season and Right Whale season, OFW turbidity restrictions	Seawalls and dune walkovers throughout the project footprint
12	SW	Coquina Beach Restoration Project (FEMA Project)	Manatee County	Coastal Protection Engineering	Aug/Sep-25	Nov-25	R-33 to R-41	Longboat Pass	74,800 cy (requested) 63,450 cy (revised by FEMA, R-33 to R-36 removed because it overlaps with taper of Federal project)	Cutterhead	-13'	~3000 ft	N/A. Permits allow construction in sea turtle nesting and shorebird breeding seasons.	Further investigation needed to determine volume of sand available for dredging in the borrow source. Groins in fill location. FEMA status: currently under EHP review
13	SE	South Lake Worth Inlet Sand Trap Expansion	Palm Beach County, Contact Andy Studt	Coastal Protection Engineering, Tom Pierro	Sept. 2025	Jan. 2026	Inshore Only	SLWI Sand Trap Expansion	~115,000 cy	Hard Rock Excavator(s)/Punch	5' to 18'	3.5 to 10 miles	No blasting. Hard rock excavation anticipated, contractor with demonstrated experience required. Beneficial reuse/placement of dredge material in LWL.	Lateral expansion and deepening of existing interior SLWI Sand Trap.
14	SW	South Siesta Key Beach	Sarasota County, Joseph Kraus	TBD	Late 2025	Spring or Fall 2026	R-67 to R-77	Upland or Offshore	Storm damage repair plus maintenance sand up to ±500,000 CY	Truck Haul or Hopper Dredge	-38.0' NAVD to -47.0" NAVD	6.2 to 8.7 miles if hopper dredge	Preferred window outside of sea turtle nesting season. Screening potentially required if offshore sand used. Possible Spring Break conflicts if truck haul.	
15	SW	Manasota Key Beach	Sarasota County, Joseph Kraus	TBD	Late 2025	Spring or Fall 2027	R-171 to R-183	Upland	Storm damage repair plus maintenance sand up to ±250,000 CY	Truck Haul	N/A	N/A	Preferred window outside of sea turtle nesting season. Possible Spring Break conflicts if truck haul.	
16	SE	2026 Jupiter Inlet Sand Trap Dredging	Jupiter Inlet District	Taylor Engineering	2026-01-01	3/1/2026	R-14 - R-16 (Palm Beach Co. R-mons)	Jupiter Inlet sand trap	80,000 cy	hydraulic suction cutterhead	21.5'	3,500'	Beach placemtn operations and equipment demobilized from beach by April 30	pay in the cut, clean medium sand
17	SE	North County Comprehensive Shore Protection Project Segments 2 and 3.	Palm Beach County, Contact Andy Studt	Foth/Olsen, Steve Howard	Mar. 2026	Nov. 2026	R-19 to R-38	Offshore borrow area	~234,000 cy (Segment 2) ~ 610,000 cy (Segment 3)	Trailing Suction Hopper Dredge	64' to 72'	2.3 to 5.7 miles	Nov. through March with additional approval required for April work. 200m by 1000 m turbidity mixing zone. Vibratory screening required.	Screened shell content ≥1% of dredge volume; offsite hauling of screened shell required.
18	NE	Ponte Vedra Beach FEMA Cat G Project	St Johns County	TBD	TBD	2026	R-1 to R-46.2	Offshore/Upl and	TBD	Hopper/Truck Haul	TBD	4.5 Mile	Mechanical Screening for MEC, Tuttle Season and Right Whale season, OFW turbidity restrictions	Seawalls, Geotubes, and dune walkovers throughout the project footprint