



Florida Department of Environmental Protection
Division of Water Resource Management

Joint Coastal Permitting Updates and Efficiencies

February 5, 2016

Lainie Edwards, Ph.D.

Program Administrator – Beaches, Inlets and Ports





Updates

- Strategic Beach Management Plan
- Inlet Management Plans
- Beach Management Agreement
- Managing Resources
 - Hardbottom SOP
 - Mitigation
- Rule Updates





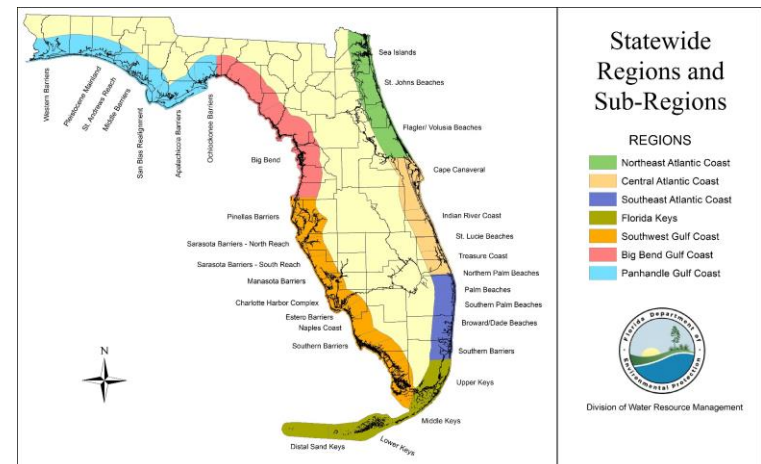
Strategic Beach Management Plan

WHAT IS SBMP?

- Lists areas of critical erosion and statewide beach project histories
- Lists improved, modified or altered inlets
- Specify design criteria for beach projects
- Lists strategies adopted by DEP and eligible for cost sharing

NEW for 2015

- Updated in 2015 from 2008
- Involved stakeholders
- Annual update
- “Living Document”





Inlet Management Planning

- **17 IMP plans with 4 plans recently updated**
 - East Pass - 2013
 - St. Augustine - 2014
 - Port Canaveral - 2014
 - St. Lucie - 2016
- **Pending IMPs**
 - Stump Pass - final draft review
 - Blind Pass and Johns Pass – finalizing study
 - Wiggins Pass– study complete, initiating IMP
 - Blind Pass (Lee)- inlet study initiated





Websites / Contact

Website:

http://www.dep.state.fl.us/beaches/publications/index.htm#inlet_management

Contacts:

Guy Weeks - coordinator

William.weeks@dep.state.fl.us

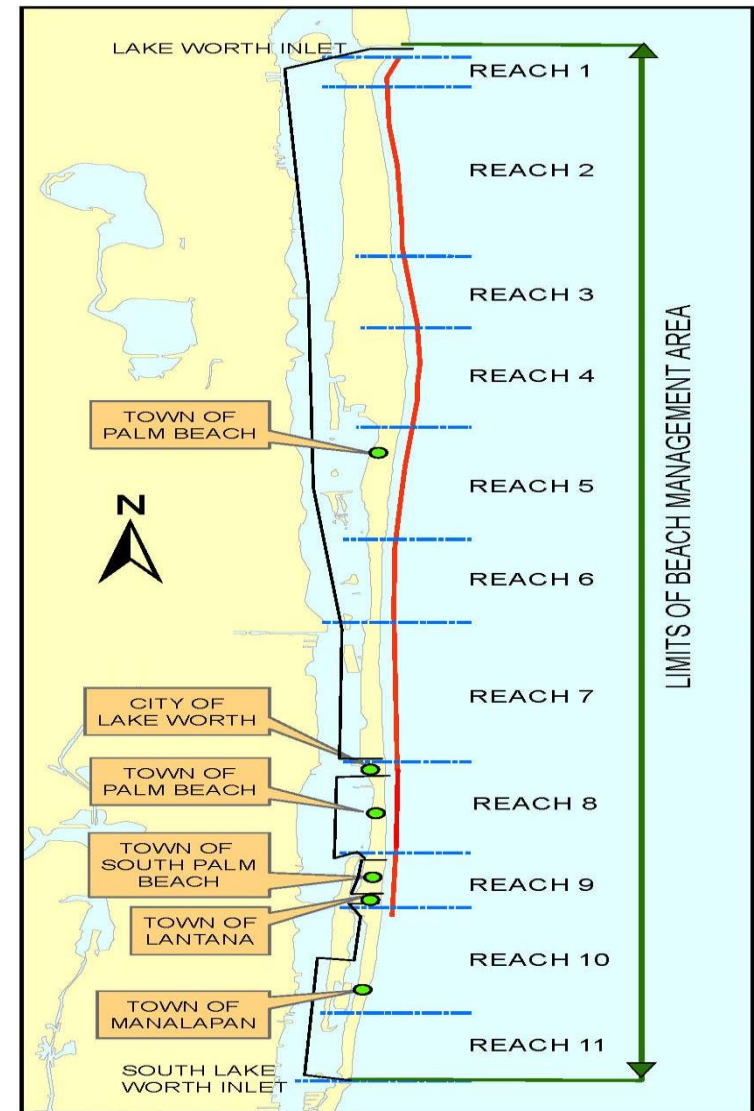
Ralph Clark, P.E., – coastal engineer

Ralph.clark@dep.state.fl.us



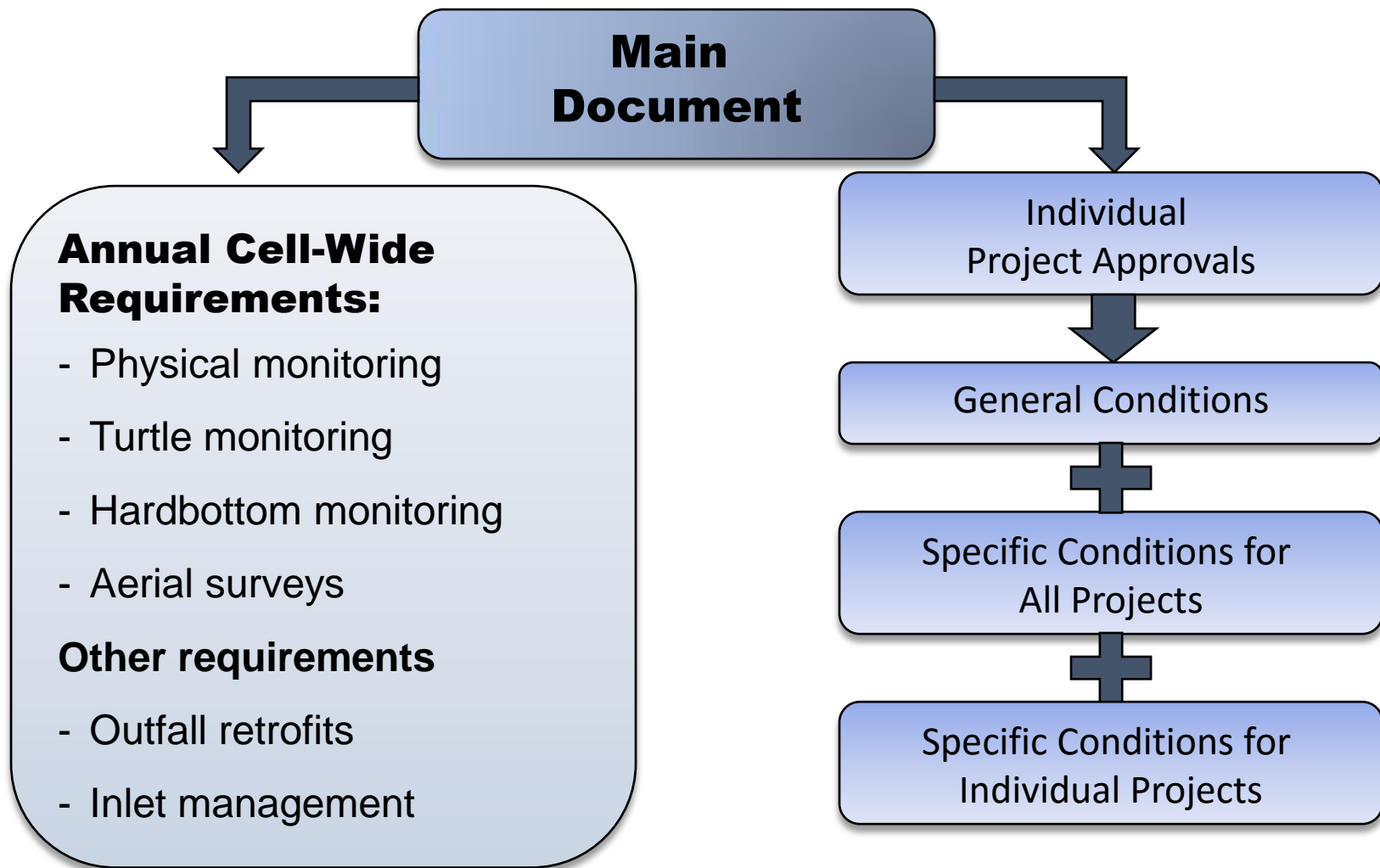
Beach Management Agreement

- Ecosystem Management Agreement: 403.0752, F.S.
- Pilot Project – Palm Beach Island
- Multiple Projects
- 4 Net Ecosystem Benefits
- Other Incentives





BMA at Work





Regulatory Status - BMA

- Individual Project Approvals:
 - Midtown and Phipps
- No new projects added to the BMA...yet
- Adaptive management underway
- Federal authorization separate
- Website:

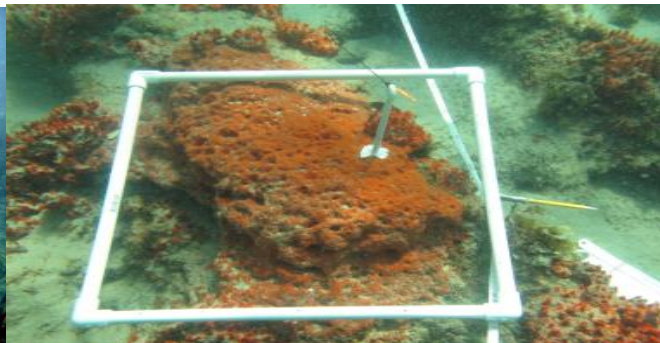
<http://www.dep.state.fl.us/beaches/pb-bma/index.htm>





Managing Resources

- Standardizing resource permit conditions
- Developing consistent strategies for resource review
- Providing consistent monitoring review and more feedback to permittees
- Developing better guidance tools for permitting

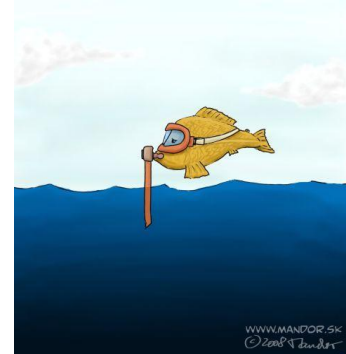




What is Hardbottom SOP?

Standard Operating Procedures

- Developed for HB monitoring of nourishment projects
- DEP consulted with filed experts
- Defines DEP approved monitoring methodologies
- Consistent with UMAM
- Provides definitions, classifications, field equipment
- Outlines preferred data analysis
- Provides guidance on data submittals and reporting formats





Hardbottom SOP

- Created to provide assistance in permitting
- Not incorporated by Rule
- Fast track to a DEP approved monitoring plan
- Can update, as new or better methods develop
- Will be posted online at DEP website (Feb)

<http://www.dep.state.fl.us/beaches/programs/envpermt.htm>





Mitigation Updates

- Options for differing impacts
- Alternative HB mitigation
- Growing field of knowledge
- UMAM Rule (62-345, F.A.C.)
 - Revised worksheet drafts will be posted
 - Announcement of next public workshop to come
 - <http://www.dep.state.fl.us/water/wetlands/mitigation/umam/index.htm>





Rule Update: 62B-49, F.A.C.

- Significant changes
 - Incorporates guidance into Rule
 - Incorporates an expedited permitting section
 - Allows for longer JCP permits
 - Allows existing permits to be extended in length
 - New, more streamlined JCP Application
- Small Changes
 - Updated Bureau references
 - Updated new programmatic information
 - Incorporated electronic submittals
 - Consistency, clarifications

<http://www.dep.state.fl.us/beaches/rules.htm>



Other Updates

- Personnel changes – coverage of SW area
- New templates / forms
- More guidance to be developed
- More site visits
- Increased coordination





THANK YOU



Lainie Edwards, Ph.D.

Lainie.edwards@dep.state.fl.us

850-245-7617