

Regional Coordination in Shoreline Resiliency Strategies

**FSBPA Annual Conference
September 24, 2015**

**Jennifer L. Jurado, Ph.D.
Environmental Planning and Community Resilience Division
Broward County**

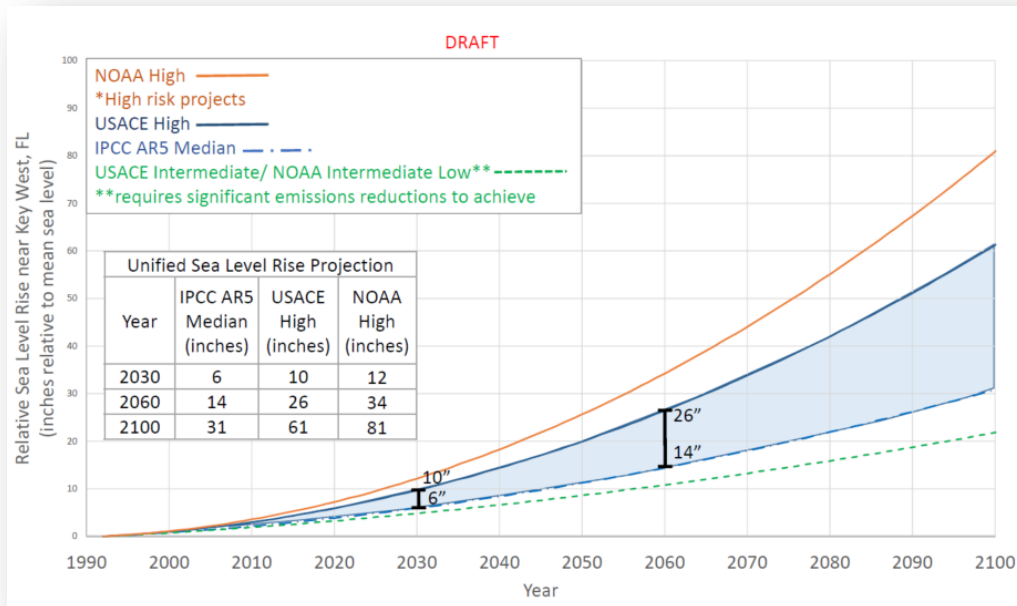
The Southeast Florida Regional Climate Change Compact

- Fully Ratified January 2010, provides for:
 - Policy Collaboration
 - Development of Regional Tools
 - Unified SLR Projection
 - Inundation Maps
 - GHG Emissions Baseline
 - Creation of a Regional Action Plan
 - Convening of Annual Summits



Climate Change and Shoreline Impacts

- Increased storm, wind and wave intensity
- Higher sea level



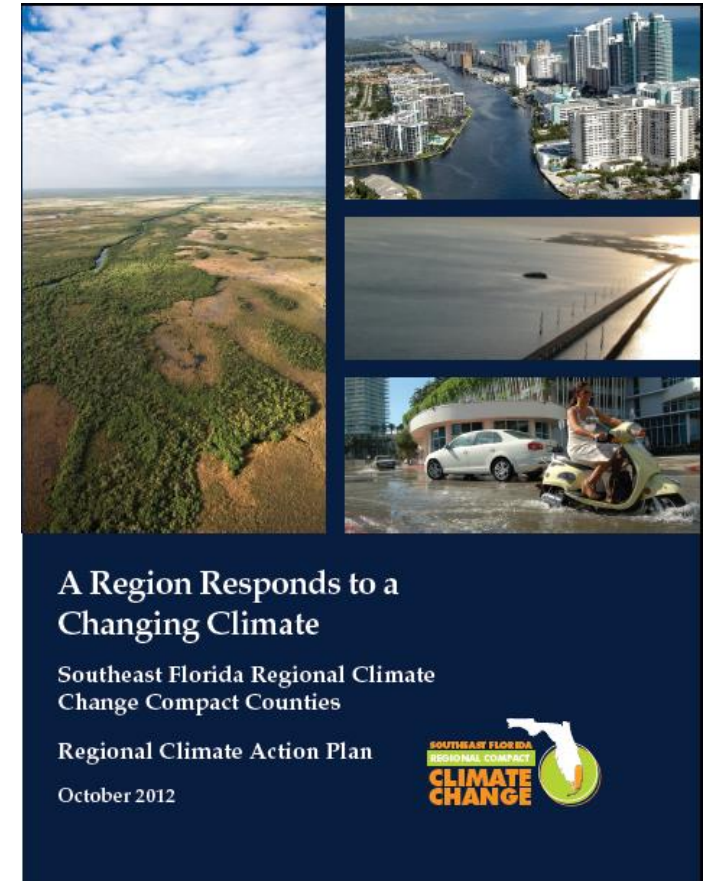
Resiliency Planning Framework

Goal: Reduce financial and physical losses with a more resilient natural and built physical environment

Representative Strategies:

- RR- 6 Adopt consistent plans at all levels of regional government that adequately address and integrate mitigation, sea level rise and climate change adaptation (*risk reduction*)
- NS-7 Coordinate “living shorelines” objectives at regional scales to foster natural infrastructures instead of or in addition to grey infrastructure (*natural systems*)
- SP-8 Incorporate “Adaptation Action Area” definition into Comprehensive planning, develop criteria for defining, identify locations, and priority funding for infrastructure needs or adaptation improvements (*sustainable practices*)

Adopted January 2010



100 + mitigation and adaptation recommendations

Reassessing Coastal Vulnerabilities



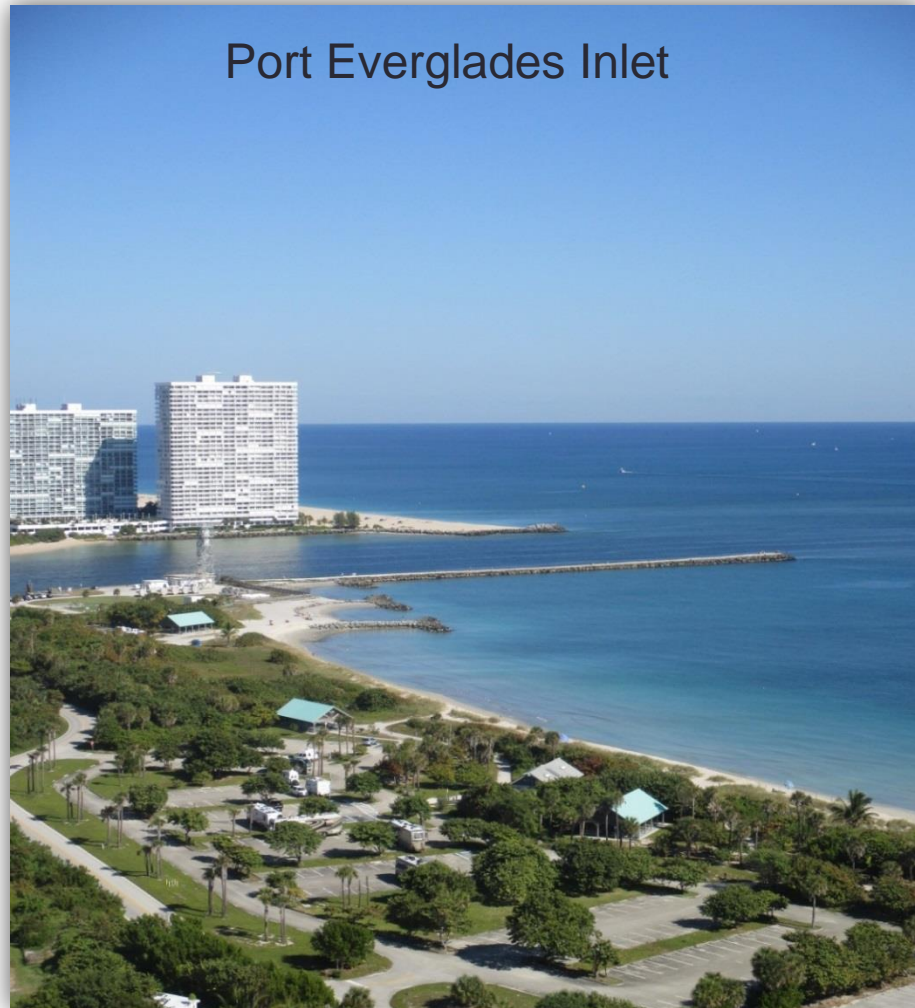
October 2012



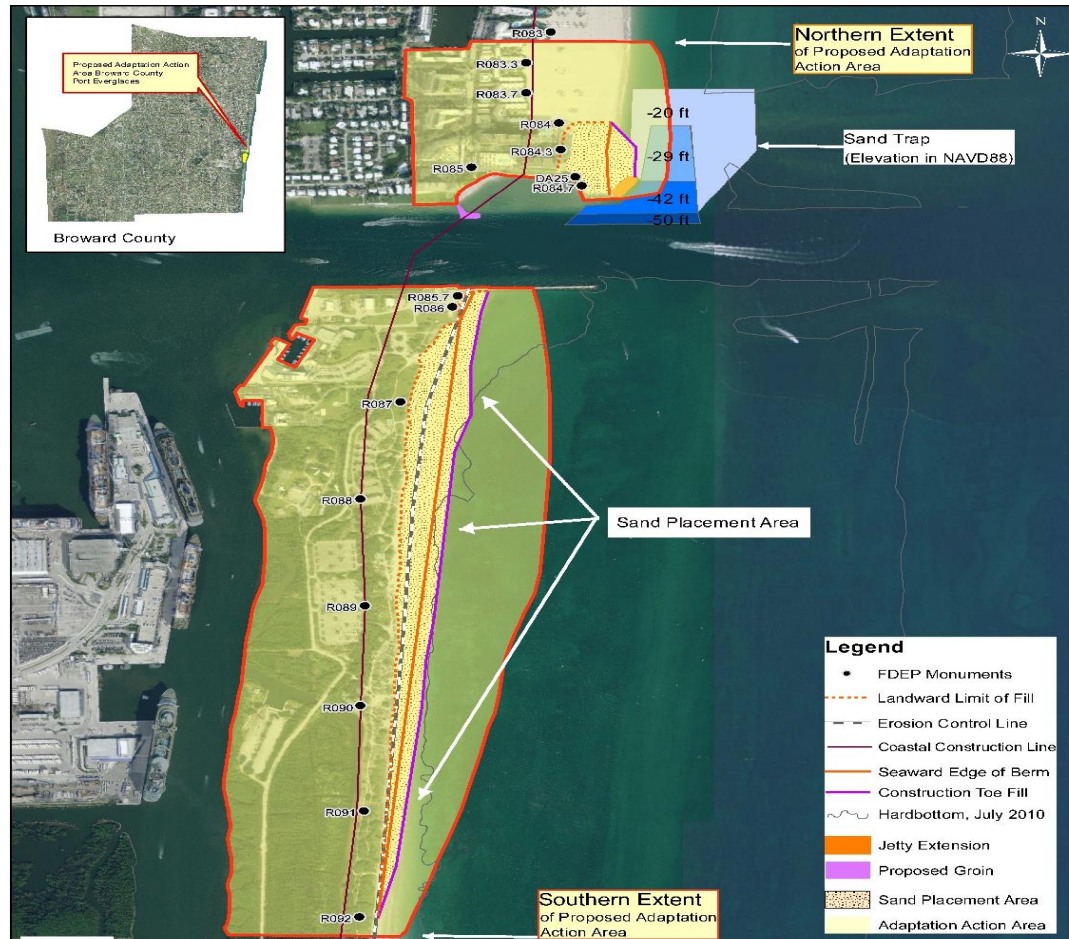
November 2012

A1A – Post Tropical Storm Sandy

Regional Sediment Management and Climate Resiliency

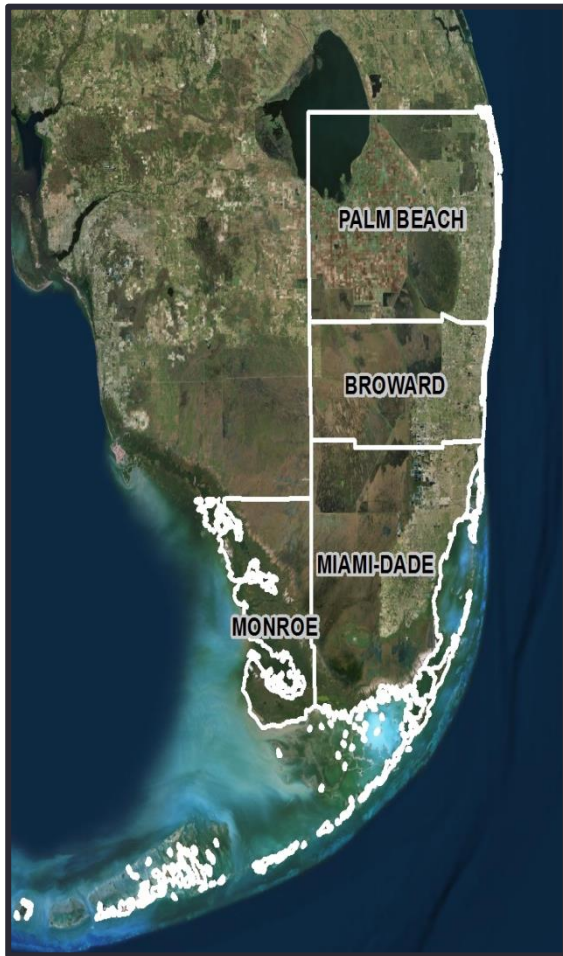


Adaptation Action Areas (AAA) of Regional Consequence

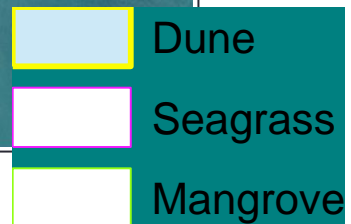


- Proposed designation as an Adaptation Action Area (AAA)
- Incorporation into County's Comprehensive and Land Use Plans
- Project is a hallmark climate resilience strategy for the County
- Reinforces resiliency as part of beach management

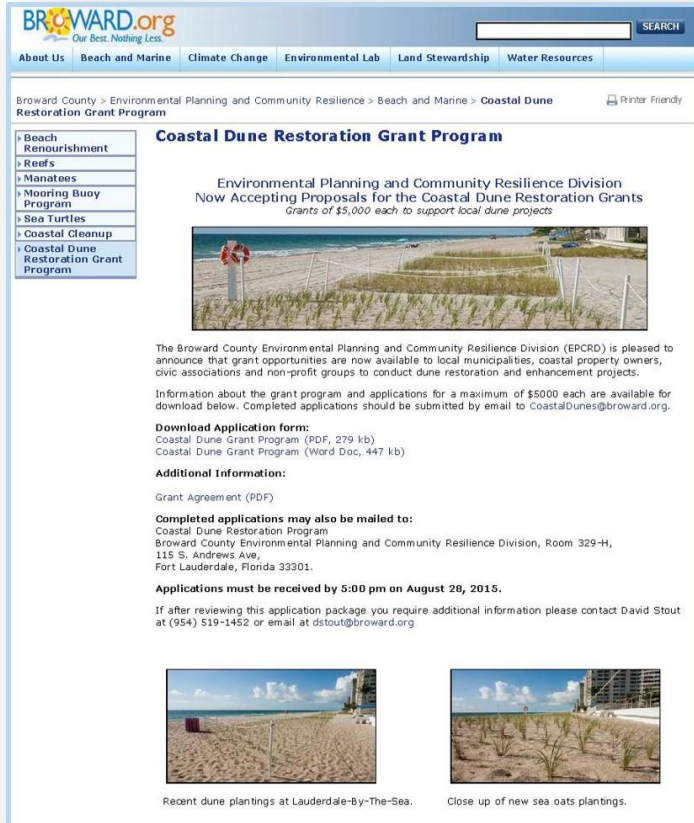
Compact Shoreline Resilience Working Group



Coordinated mapping of living shoreline features



Influence on Regional Planning



The screenshot shows the Broward.org website with a navigation bar at the top. The main content area is titled "Coastal Dune Restoration Grant Program" and includes a sidebar with links to various environmental programs. The main text announces that the Environmental Planning and Community Resilience Division is now accepting proposals for grants of \$5,000 each to support local dune projects. It provides information about the grant program, including a download link for the application form and additional information. The page also features two small images: "Recent dune plantings at Lauderdale-By-The-Sea" and "Close up of new sea oats plantings."

Broward.org
Our Best. Nothing Less.

About Us | Beach and Marine | Climate Change | Environmental Lab | Land Stewardship | Water Resources

Broward County > Environmental Planning and Community Resilience > Beach and Marine > Coastal Dune Restoration Grant Program

Coastal Dune Restoration Grant Program

Environmental Planning and Community Resilience Division
Now Accepting Proposals for the Coastal Dune Restoration Grants
Grants of \$5,000 each to support local dune projects

The Broward County Environmental Planning and Community Resilience Division (EPCRD) is pleased to announce that grant opportunities are now available to local municipalities, coastal property owners, civic associations and non-profit groups to conduct dune restoration and enhancement projects.

Information about the grant program and applications for a maximum of \$5000 each are available for download below. Completed applications should be submitted by email to CoastalDunes@broward.org.

Download Application form:
Coastal Dune Grant Program (PDF, 279 kb)
Coastal Dune Grant Program (Word Doc, 447 kb)

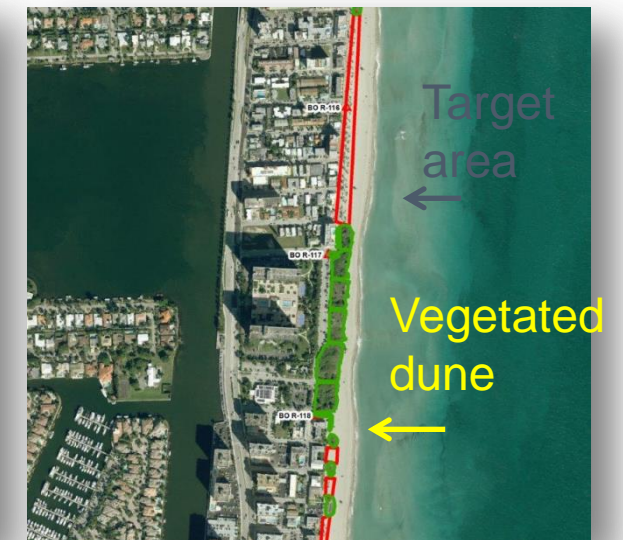
Additional Information:
Grant Agreement (PDF)

Completed applications may also be mailed to:
Coastal Dune Restoration Program
Broward County Environmental Planning and Community Resilience Division, Room 329-H,
115 S. Andrews Ave.
Fort Lauderdale, Florida 33301.

Applications must be received by 5:00 pm on August 28, 2015.
If after reviewing this application package you require additional information please contact David Stout at (954) 519-1452 or email at dstout@broward.org

Recent dune plantings at Lauderdale-By-The-Sea. Close up of new sea oats plantings.

- Helped identify priority projects
- Revealed regional disparities
- Influenced goal setting for parity
- Validated grant program effort

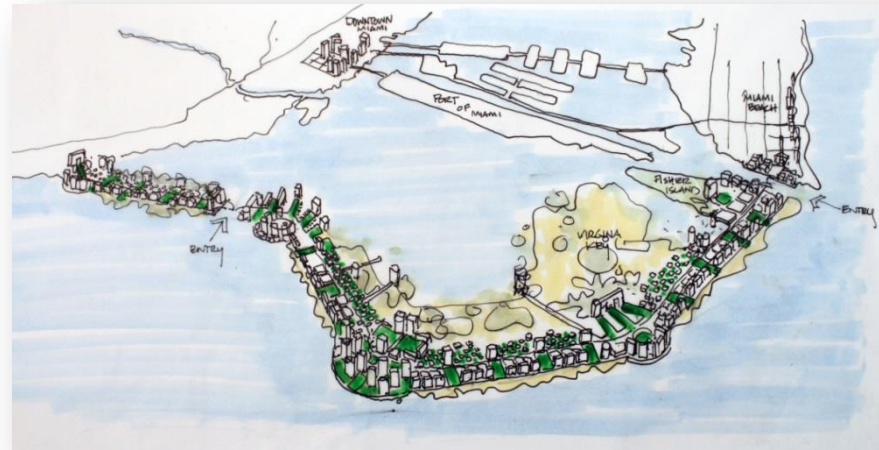


South Florida Resilient Redesign

- Dania Beach • Delray Beach • Hollywood
- Miami-Beach • Key West



Naturally Buffered Boulevard



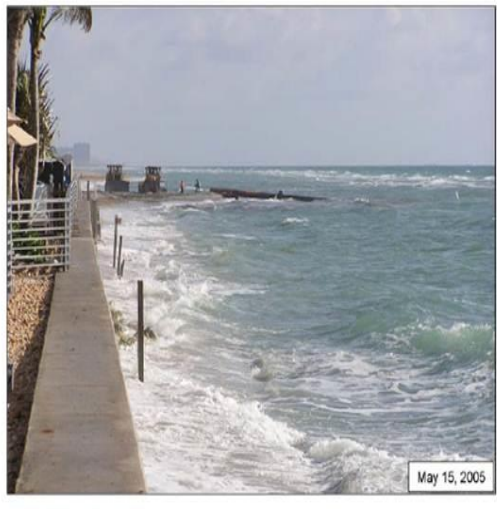
Enhanced and Functional Dunes



Protective Reef



The Realized Benefits of Beach Preservation



Active 2015 Nesting for Hillsboro/Deerfiled Beach
Nourishment Project on Pre-Project Aerial

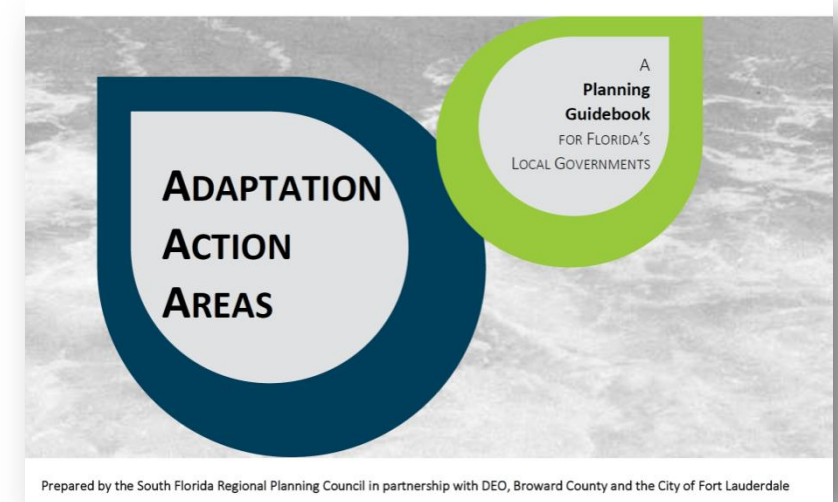


Built and Natural Systems

- Communities
- Economies
- Infrastructure
- Services
- Critical Habitat

Lessons from the Compact Process

- Collaboration in resiliency has:
 - Accelerated regional and local planning
 - Expanded expertise
 - Produced transferable models
 - Enhanced access to resources and information
 - Broadened partnerships
 - Cultivated cooperation
 - Inspired innovation



Questions?