

Robert G. Dean, ScD, P.E. Contributions to the State of Florida

Michael Barnett, Senior Coastal Engineer, Tetra Tech
(and Former Graduate Student and Former FDEP Employee)

Robert G. Dean, ScD, P.E.

Contributions to the State of Florida



State Service

Director, Division of Beaches and Shores (1985-1987)

Academic

University of Florida Faculty

- Professor & Chairman, Coastal & Oceanographic Engineering Department – 1966-1972
- Chairman & Graduate Research Professor, 1982-2000
- Professor, Coastal & Oceanographic Engineering Program, Civil Engineering Department, 2001-2003
- Emeritus Graduate Research Professor, Coastal & Oceanographic Engineering Program, Civil Engineering Department, 2003-2015

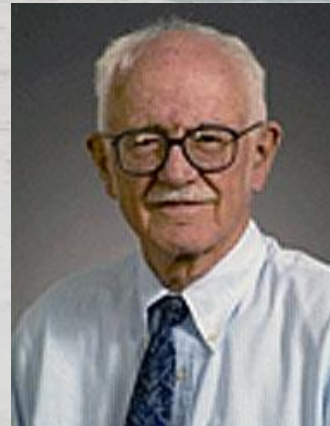
Student Mentoring

Technical Reports

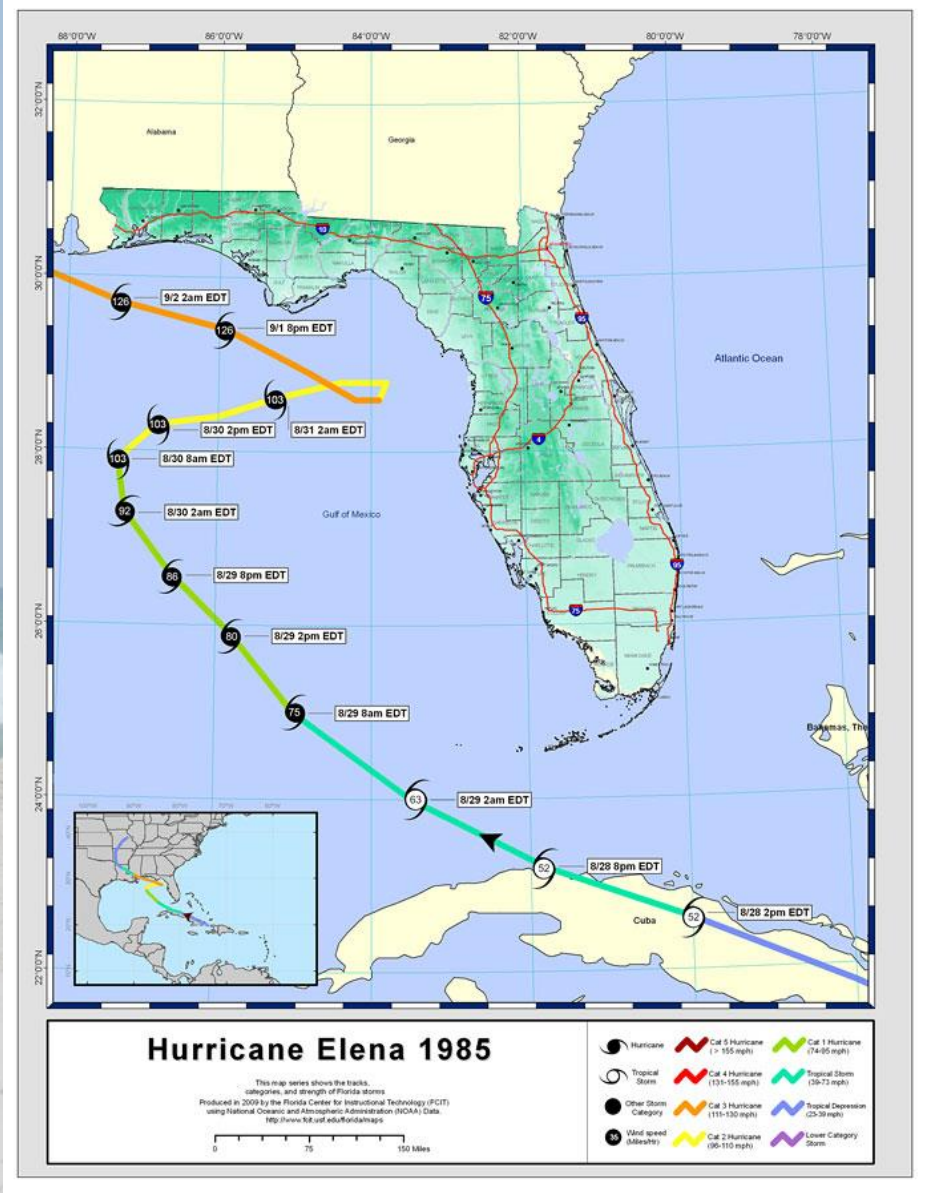
Journal Articles

Conference Presentations

Consulting



Director, Florida Department of Natural Resources' Division of Beaches and Shores 1985-1987



Director, Florida Department of Natural Resources' Division of Beaches and Shores 1985-1987

Florida DNR Division of Beaches and Shores - Restore Our Coast Task Force – April 1986



(Growth Management Legislation – 1985)
Beach Management Legislation – Adopted 1986
Coastal Armoring Policy
“Split” time between Gainesville and Tallahassee

Coastal Construction Control Line Program

Methodology on Coastal Construction Control Line Establishment

- Original Report 1984 following public workshops
- Collaborative effort with Beaches and Shore Resource Center
- Report updated (methods and procedural improvements) in June 2002
- 24 Coastal Counties in Florida – lines established

Modeling work for individual County studies

- 100-yr storm erosion model and tools

Expert witness to program challenge – Charlotte County

1990's – coastal armoring issues

- multiple appearances before Governor & Cabinet

Support of Reestablishment Studies and Public Hearings in Panhandle following 2004-2005 hurricanes

Published Works - 1998

“Evaluation of Report: Survey-based Sediment Budget Analysis for Sebastian Inlet, Volumes I, II, and III, by William R. Dally and Kathy FitzPatrick,” Evaluation conducted by: R.G. Dean, January 14, 1998, *UFL/COEL-98/002*, Coastal and Oceanographic Engineering Department, University of Florida, Gainesville, FL.

“Projected Flood Hazard Lines for Brevard County, Florida,” *UFL/COEL-98/003*, Coastal and Oceanographic Engineering Department, University of Florida, Gainesville, FL. Co-author: S. Malakar.

“Projected Flood Hazard Lines for Escambia County, Florida,” *UFL/COEL-98/004*, Coastal and Oceanographic Engineering Department, University of Florida, Gainesville, FL. Co-author: S. Malakar.

“Projected Flood Hazard Lines for Lee County, Florida,” *UFL/COEL-98/005*, Coastal and Oceanographic Engineering Department, University of Florida, Gainesville, FL. Co-author: S. Malakar.

“Preliminary Investigation of the Characteristics of Coastal Lake Outlets in the Florida Panhandle, Hurricane Opal Beach Recovery Study: Task C,” *UFL/COEL-98/010*, Coastal and Oceanographic Engineering Department, University of Florida, Gainesville, FL. Co-author: A.E. Browder.

Published Works - 1998

“Characteristics of the Shoreline Change Along the Sandy Beaches of the State of Florida: An Atlas,” *UFL/COEL-98/015*, Department of Coastal and Oceanographic Engineering, University of Florida, Gainesville, FL. Co-authors: J. Cheng and S.B. Malakar.

“Beach Nourishment: A Limited Review and Some Recent Results,” Keynote Address, *Proceedings, 26th International Conference on Coastal Engineering*, Copenhagen, Denmark, Summer, 1998. 26(1): 47-71.

“Shoreline Change Characteristics for Florida: Part 1 -East Coast of Florida,” Submitted for Publication Consideration to the *Journal of Coastal Research*. Co-author: J. Cheng.

“Shoreline Change Characteristics for Florida: Part 2 -West Coast of Florida,” Submitted for Publication Consideration to the *Journal of Coastal Research*. Co-author: J. Cheng.

“Statistical Distribution of the Standard Deviation of Shoreline Deviations for Florida’s Coastline,” Submitted for Publication Consideration to the *Journal of Coastal Research*. Co-author: J. Cheng.

“Two Problems Related to Orville Magoon’s Coastal Engineering Interests: Sand Rights and Breakwaters,” *Shore and Beach*, 67(1): 14-17

Published Works - 1998

“Midtown Beach Nourishment Project in Palm Beach, Florida: Monitoring Report, October 1995 to April 1998,” *UFL/COEL-98/012*, Coastal and Oceanographic Engineering Department, University of Florida, Gainesville, FL.

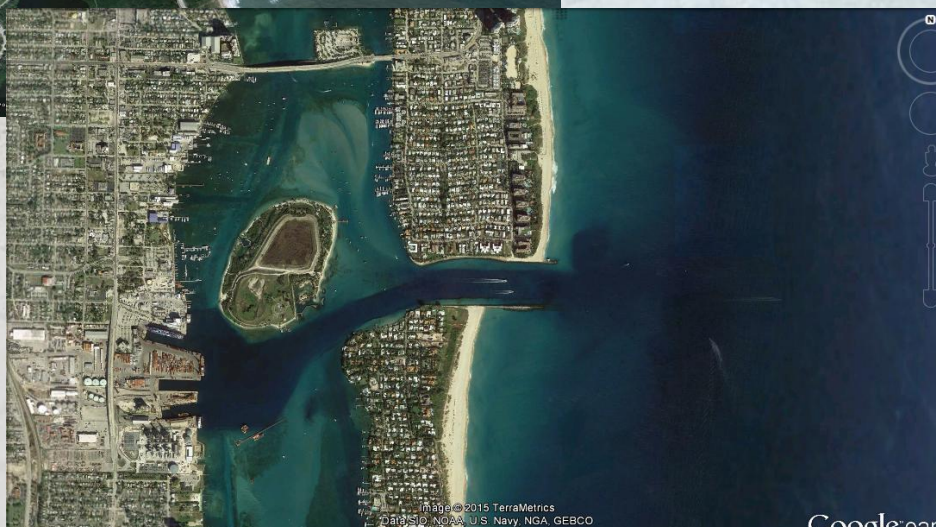
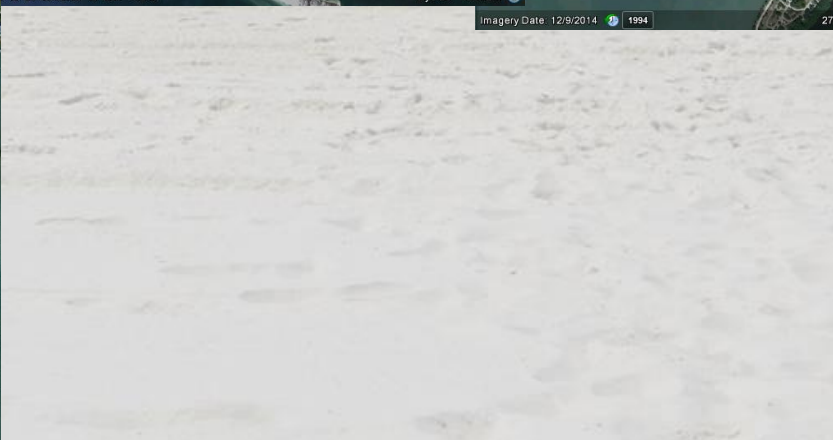
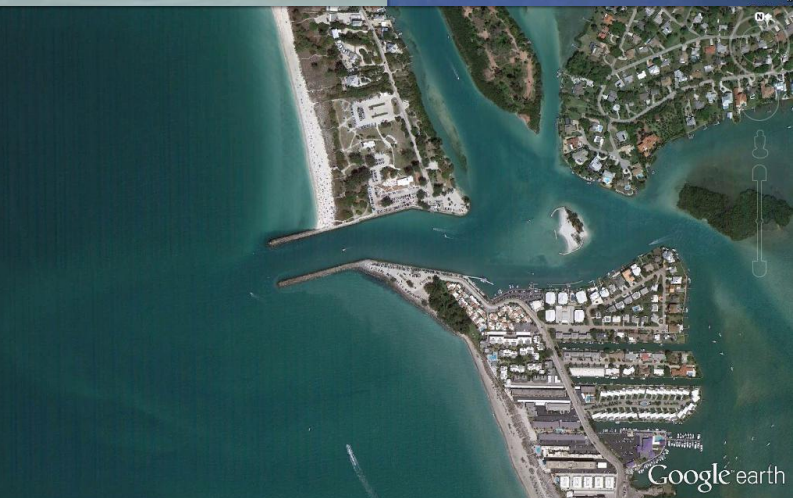
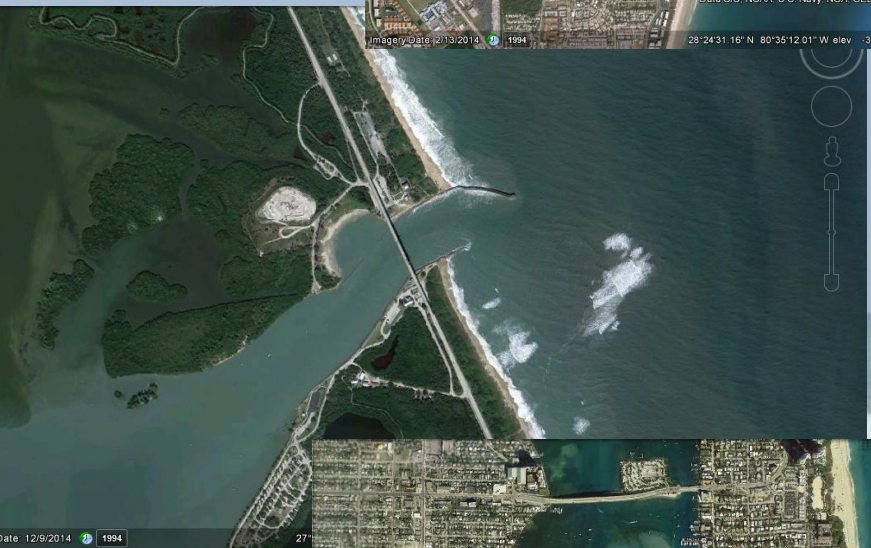
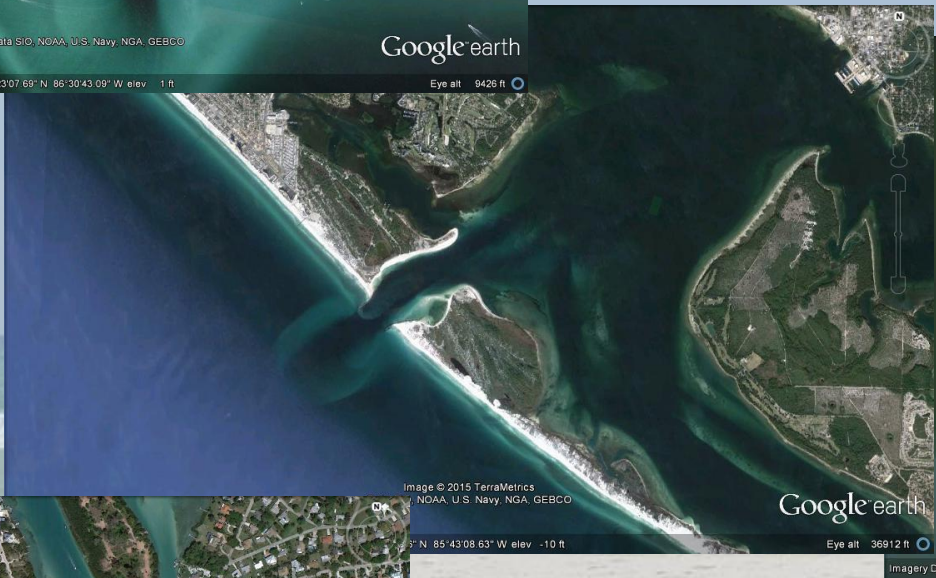
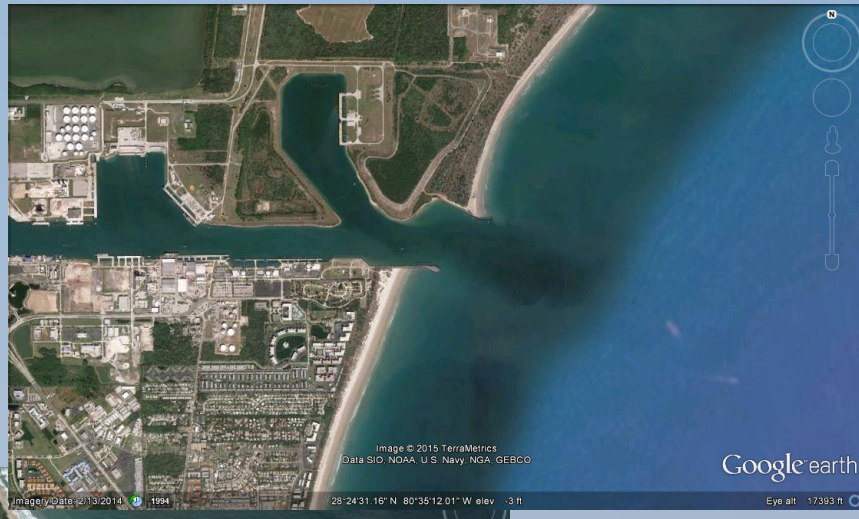
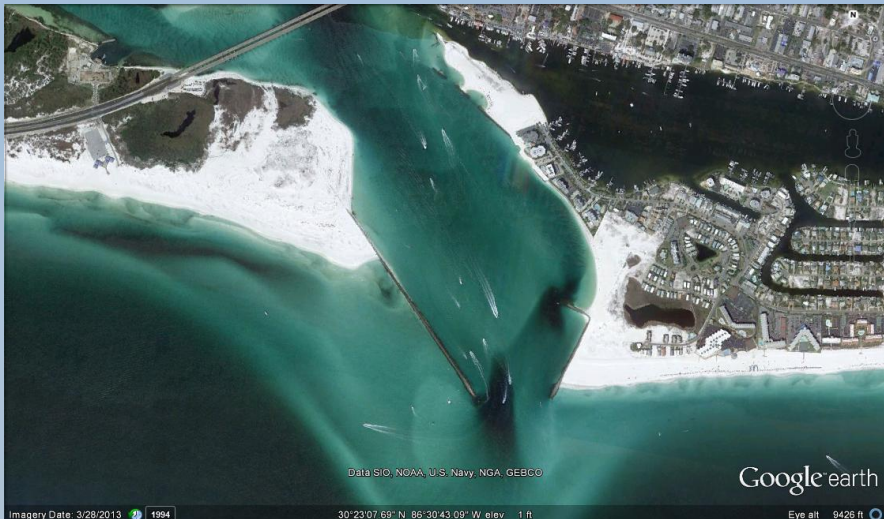
“Methodology for Estimating Sand Resource Equities in the Vicinity of Coastal Modifications,” In *Proceedings of Conference on Emerging Trends on Beach Erosion and Sand Rights Law*, Florida Shore and Beach Preservation Association, June 3-5, Captiva Island, FL, pp. 327-340. Co-author: T. P. Campbell.

“Projected Flood Hazard Zones in Florida,” Special Issue 28, *Journal of Coastal Research*, 85-94. Co-author: S. B. Malakar.

“The 1996 Beach Nourishment at Two Sites on St. Augustine Beach: Monitoring Results and Interpretation,” In *Proceedings of the 11th Annual National Conference on Beach Preservation Technology*, Florida Shore and Beach Preservation Association, Feb. 4-6. St. Petersburg, FL, pp. 43-60. Co-author: K. A. Donohue.

“Equilibrium Beach Profiles: Concepts and Evaluation,” Submitted for Publication Consideration to the *Journal of Geophysical Research*. Co-author: L. L. Charles.

Inlet Legislation - 2008



Thank you

