

Cooperatively Managing a 46 mile, \$14 million Annual Program with Federal, State, County, and Municipal Funding

(And not losing our minds in the process...)

**Leanne Welch
Palm Beach County**

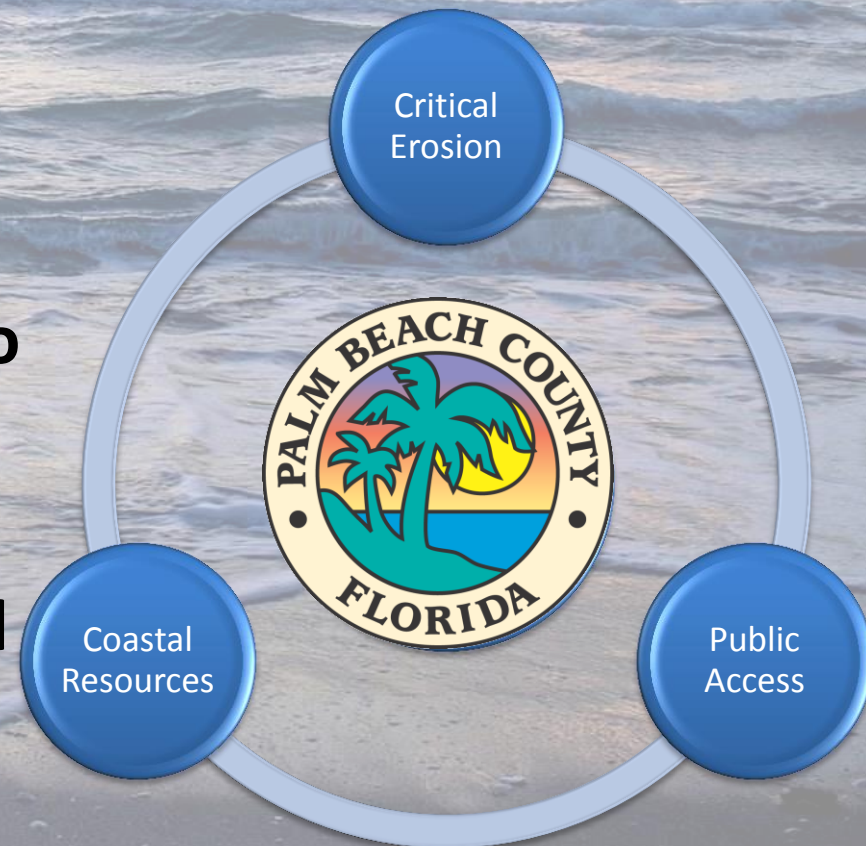
**2014 FSBPA Annual Conference
September 24-26, 2014
Bonita Springs, Florida**



**FLORIDA SHORE & BEACH
PRESERVATION ASSOCIATION**
A League of Cities and Counties on Beach and Coastal Issues

Palm Beach County's Shore Protection Program

- 46 miles of coastline
- 31 miles critically eroded
- 26 miles publicly accessible
- How do we decide where to use limited funding and resources?
- A project is eligible for local funding only if it can pass the “three question exam”



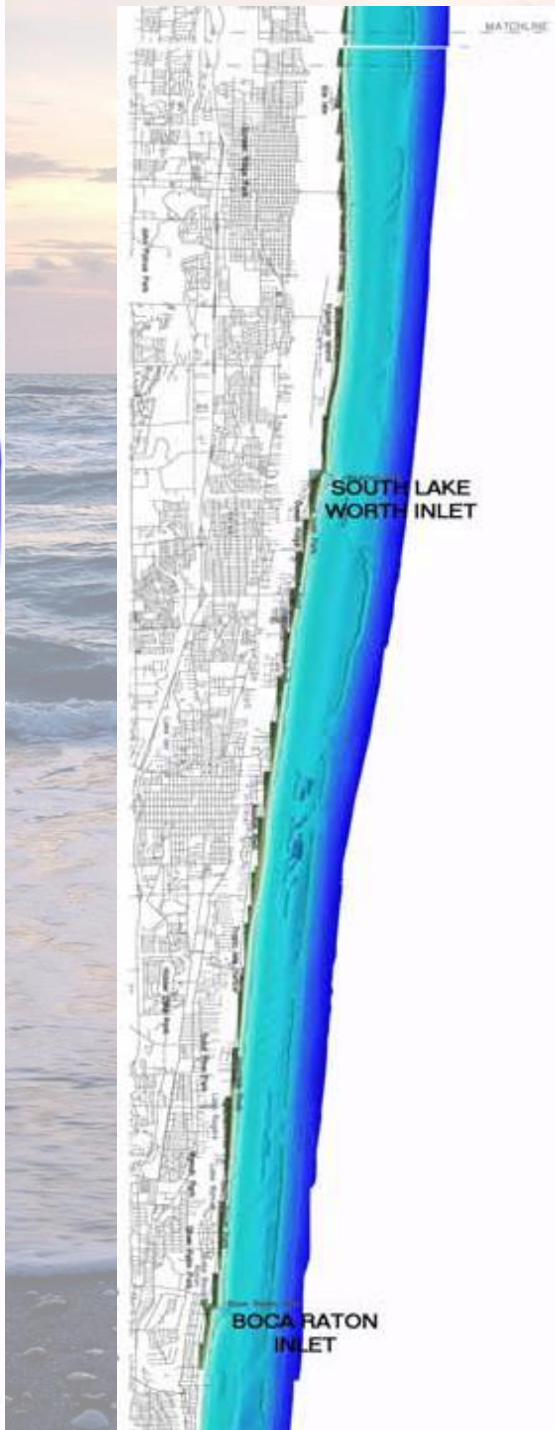
Palm Beach County's Shore Protection Program

- County-wide cost of maintaining the beaches averages ~\$14 million per year.
- (10-year average of project costs)
- Includes all phases of a project, obviously some years cost more than others...



All this beauty doesn't come cheap!





Inlet Management Projects in Palm Beach County

- Four Inlets
 - Two Natural
 - Jupiter
 - Boca Raton
 - Two Man made
 - Lake Worth (Palm Beach)
 - South LW (Boynton)
- All are stabilized and managed



Shoreline Protection Projects in Palm Beach County

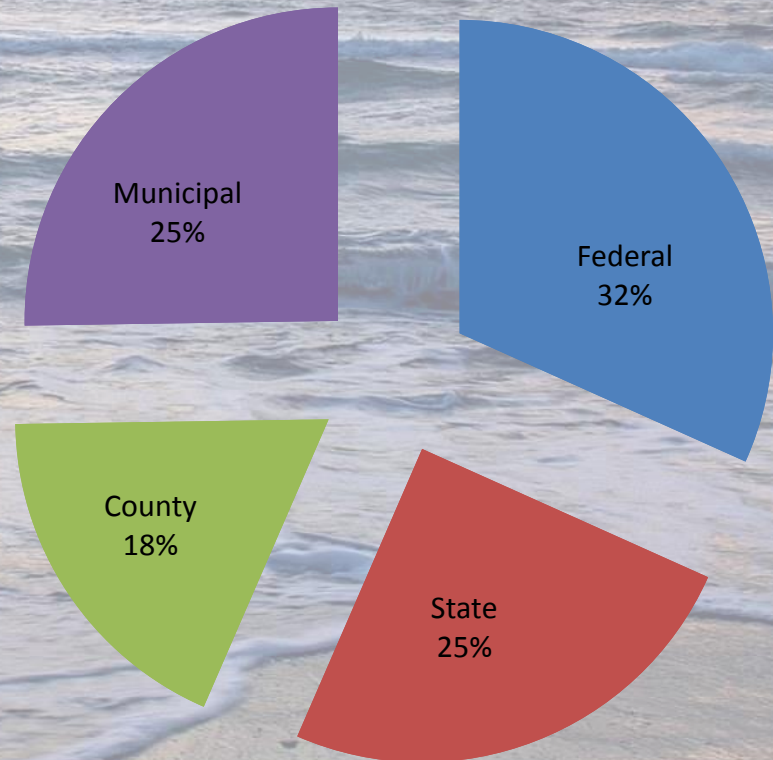
- Coral Cove
- Jupiter/Carlin
- Juno Beach
- Singer Island
- Palm Beach
- South Palm Beach
- Ocean Ridge
- Delray Beach
- Boca Raton



So, how do we pay for all of these projects?

•Funding Sources include:

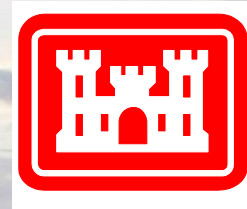
- Federal (USACE and FEMA)
- State (DEP)
- County (TDC)
- Local Municipalities



Percentages based on 10-year average



Federal Funding



•With the exception of Palm Beach Harbor, Federal funding has not been available in past decade in PBC due to loss of earmarks and difficulty with prioritizing decision documents for *Reimbursement Projects*.

•Hurricane Sandy changed all that for FY 13 projects

- **FCCE only**
 - Jupiter/Carlin \$4.0M
- **FCCE + CG**
 - North Boca \$5.1M
 - Delray Beach \$4.1M
- **CG Only**
 - Ocean Ridge \$6.7M
- **O&M**
 - Palm Beach Harbor \$5.0M

State Funding



2014-2015 DEP Funding Requests for Palm Beach County Projects

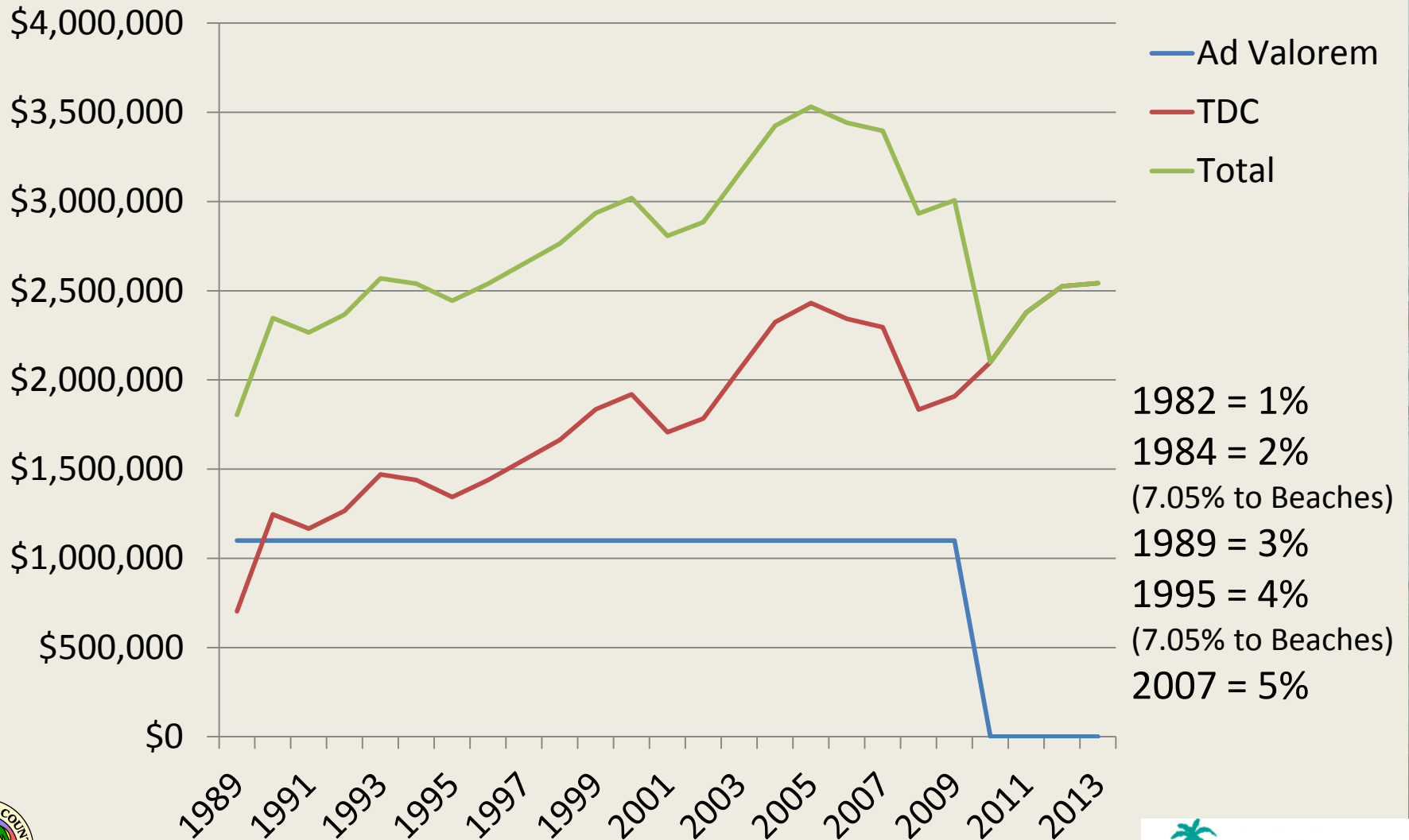
- \$17 Million requested
- Total State funding to Palm Beach County in 2015 is \$3,769,816
 - (8% of total available Statewide - \$47.3 Million)
- Over \$13 million in requests unfunded.
- Coral Cove, Central Palm Beach County, and Boca South was requested to reimburse county and municipal dollars expended in 2013
- Boca Inlet, Boca Central, Midtown, and Phipps Park projects will be built in 2015 regardless of funding partnership from the state

FY 2014-15 BEACHES FUNDING REQUESTS			
No.	Project Name	State Grant Funding Request	Results
1	Coral Cove Park Dune Restoration	\$470,000	Not funded
2	Jupiter/Carlin Shore Protection	\$1,625,000	Fully funded
3	Juno Beach Shore Protection	\$375,000	Not funded
4	Singer Island Shore Protection Project	\$639,120	Not funded
5	Central Palm Beach County Erosion Control Project	\$190,000	Not funded
6	South Lake Worth Inlet Mgmt	\$648,750	Not funded
7	Ocean Ridge Shore Protection	\$751,300	Fully Funded
8	Delray Beach Renourishment	\$1,006,016	Fully Funded
9	Boca Raton North Beach Shore Protection	\$351,500	Fully Funded
10	Boca Raton Central Beach Shore Protection	\$3,387,916	Not Funded
11	Boca Raton South Beach Shore Protection	\$1,385,190	Not Funded
12	Boca Raton Inlet	240,000	Not Funded
13	Lake Worth Inlet Mgmt	\$36,000	Fully Funded
14	Midtown Beach Restoration	\$5,531,960	Not Funded
15	Phipps Park Restoration	\$812,370	Not Funded



County Funding

1988 – 2009 = \$1.1 M Ad Valorem + TDC
2010 – present = TDC only



Hotel Taxes Collected from Visitors



Total Palm Beach County Bed Taxes

2013 Collections \$31M

Sales Taxes

2013 Collections \$59M

(incl. Ancillary Revenues)

County Beach Hotels Only

28% of Rooms generate 50% of Tax Revenue

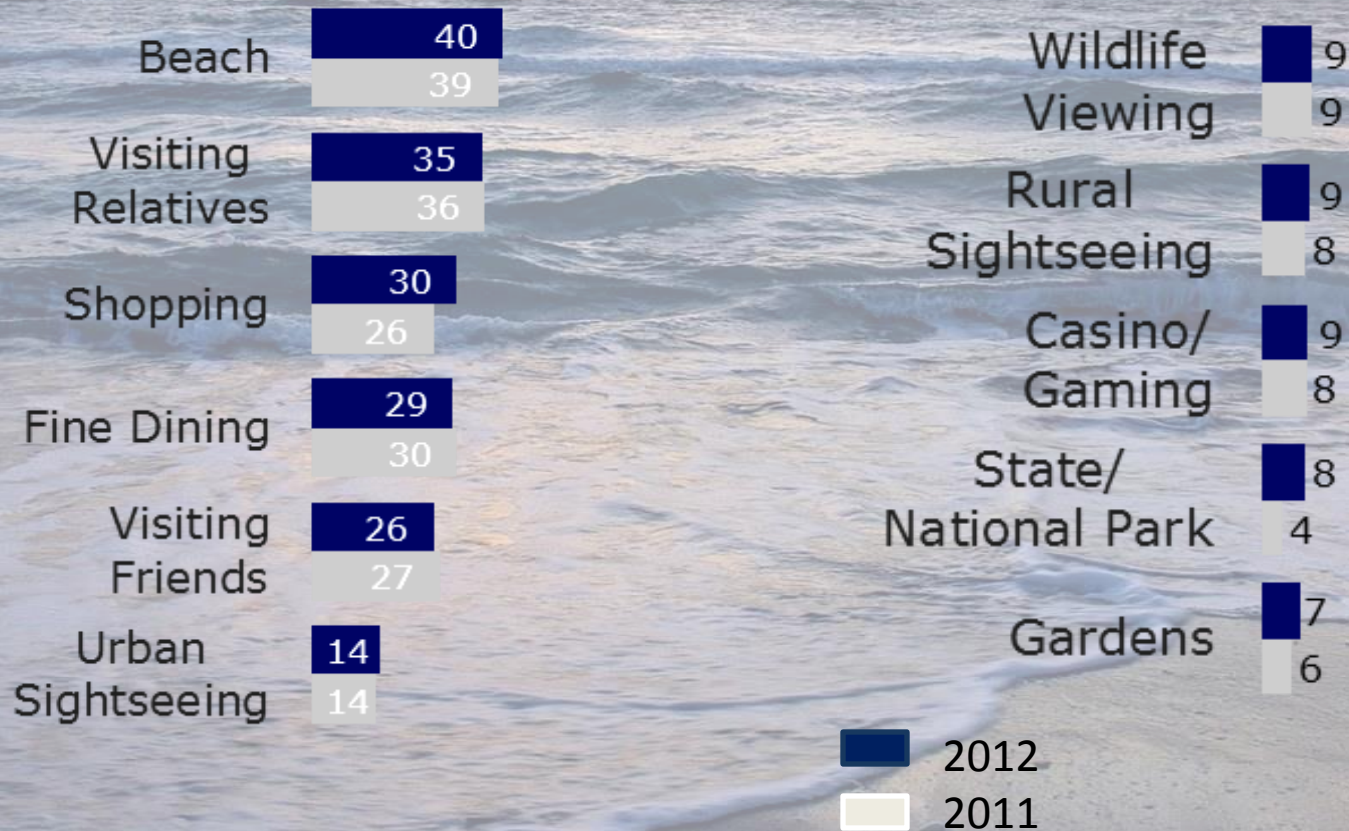
Bed Taxes

2013 Collections \$15M

Sales Taxes

2013 Collections \$30M

What do they do when they get here?



Source: TNS TravelsAmerica



Tourist Development Tax Collections (5%)

2012 = \$28.8M (\$2.37M to Beaches)

2013 = \$30.5M (\$2.5M to Beaches)

2014 *Forecast* \$31M+ (\$2.54M to Beaches)

- WHEREAS, the “Local Option Tourist Development Act” set forth in Section 125.0104, Florida Statutes, (hereinafter “statute”), authorizes the Board of County Commissioners (hereinafter “Board”) to levy and impose a tourist development tax on the exercise within the County boundaries of the privilege of renting, leasing, or letting for consideration any living quarters or accommodations in any hotel, apartment hotel, motel, resort motel, apartment, apartment motel, roominghouse, mobile home park, recreational vehicle park or condominium for a term of six (6) months or less
- A portion of the 2nd and 4th cent collected is set aside to provide beach improvement, maintenance, renourishment, restoration and erosion control with an emphasis on dune restoration where possible.

Local Funding

Two Versions...

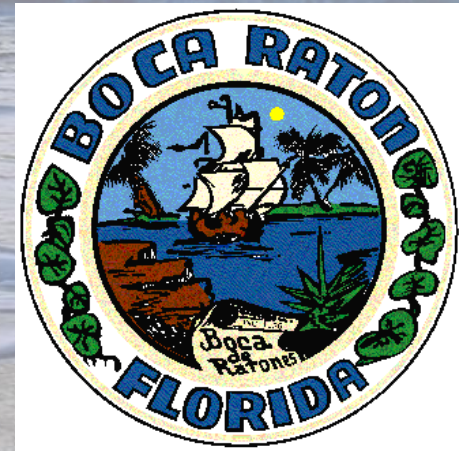
1- *They pay us*



Local Funding

Two Versions...

2- We pay them



Why do we do what we do?

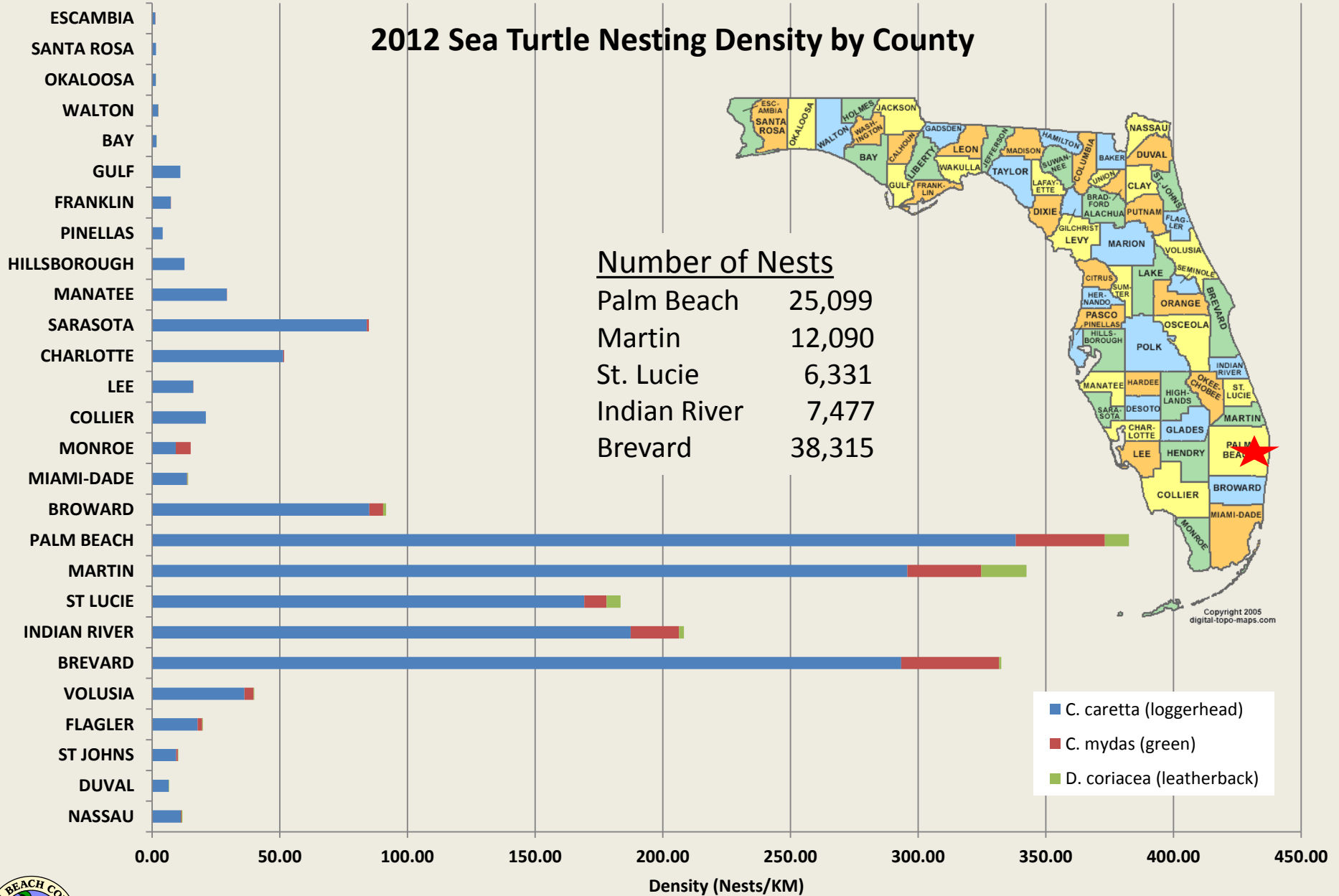


Pre-Construction
2/22/13

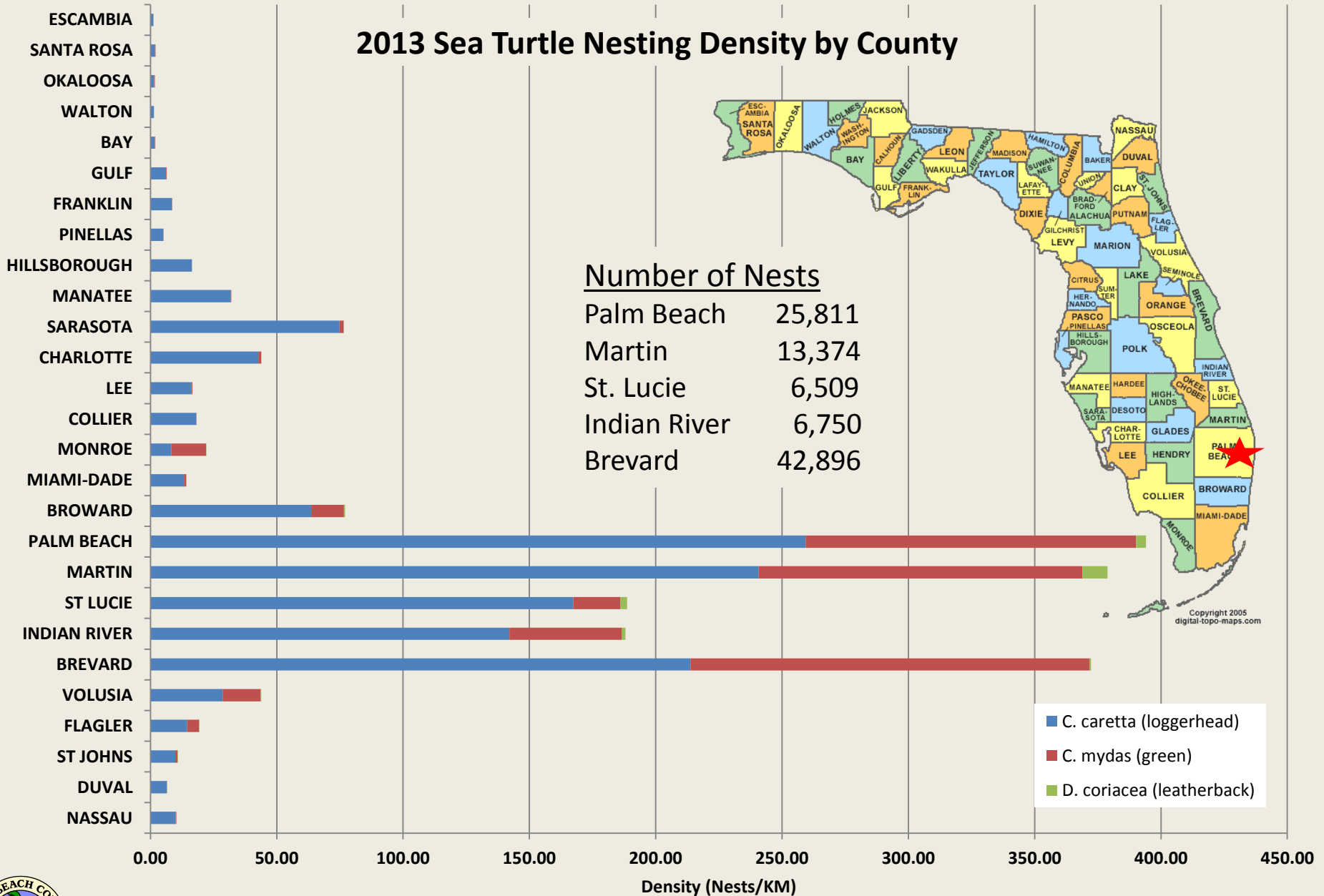


Post-Construction
5/6/13

2012 Sea Turtle Nesting Density by County



2013 Sea Turtle Nesting Density by County



Looking ahead

The bad news

- Climate change/sea level rise
- Regulatory restrictions
- Limited sand sources
- Increasing Costs

The good news

- Potential 6th cent added to PBC bed tax
- WRDA passage
- DEP funding has been somewhat reliable
- FSBPA is always there!

Thank You!

