

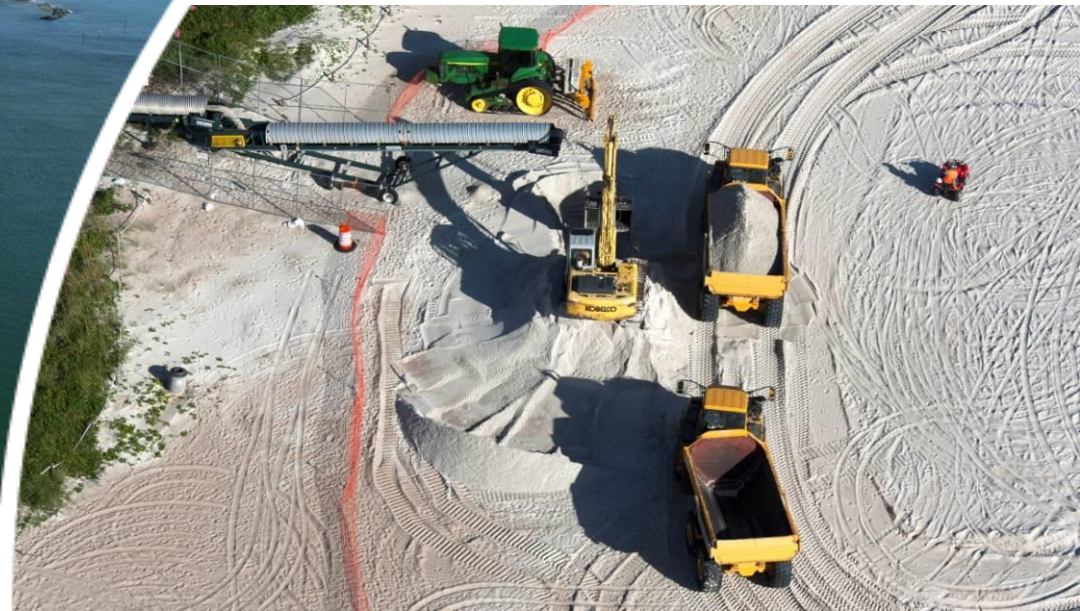
# UNPRECEDENTED COOPERATION

## BROWARD COUNTY FEDERAL EMERGENCY BEACH FILL, TRUCK HAUL PROJECT

**58<sup>th</sup> Annual Florida Shore and Beach Preservation  
Association Conference**

**Presented by Cynthia B. Perez, U.S. Army Corps of Engineers  
in collaboration with Jim LaGrone, U.S. Army Corps of Engineers  
and Bernie Eastman, Eastman Aggregate Enterprise, LLC**

**September 26, 2014**





# What can go wrong, will... encountering unplanned **CHALLENGES**



**BUILDING STRONG®**



# We overcame the challenges with **UNPRECEDENTED COOPERATION**



**USACE**



**FEDERAL/STATE COORDINATING  
AGENCIES**



**PROJECT  
SPONSOR  
& LOCAL REPS**



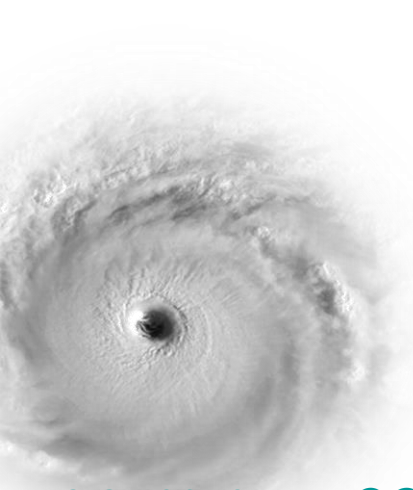
**CONTRACTOR**



**PUBLIC**



# THE CHRONOLOGY



OCT 2012

OCT 2012

NOV 2012

FEB –  
MAR 2013

APR –  
SEPT 2013

NOV 2013 –  
FEB 2014

HURRICANE  
SANDY

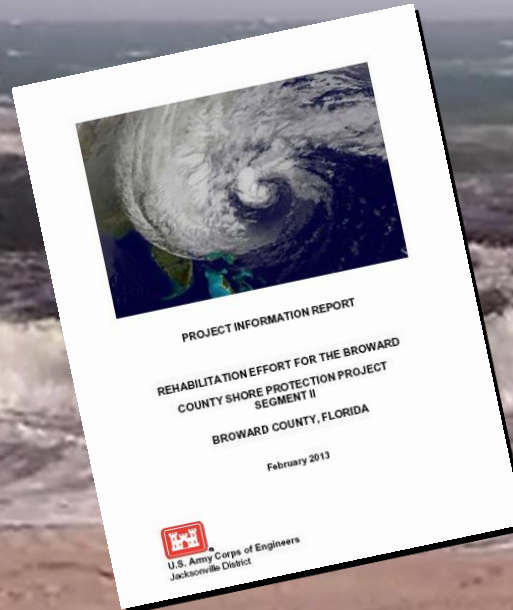
RECON  
INSPECTIONS

LOCAL  
REQUEST

PROJECT  
IMPLEMENTATION  
REPORT

DESIGN  
ADVERTISE  
AWARD

CONSTRUCTION



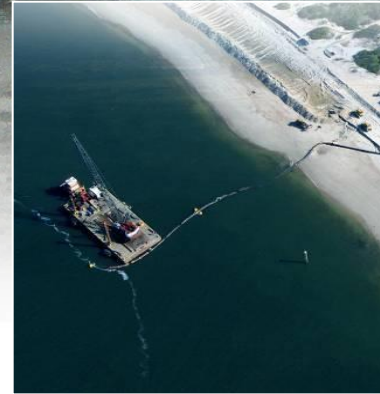




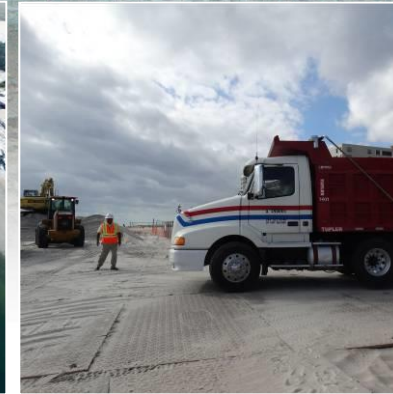
**Short  
Suspense**



**Post-storm Surveys  
Volume Comps  
IMMEDIATELY**



**Stress on  
Dredge Industry**



**Value  
Engineering  
(Truck Haul)**

# February - March 2013

## CHALLENGES: PROJECT IMPLEMENTATION REPORT





**More Data  
Collection**



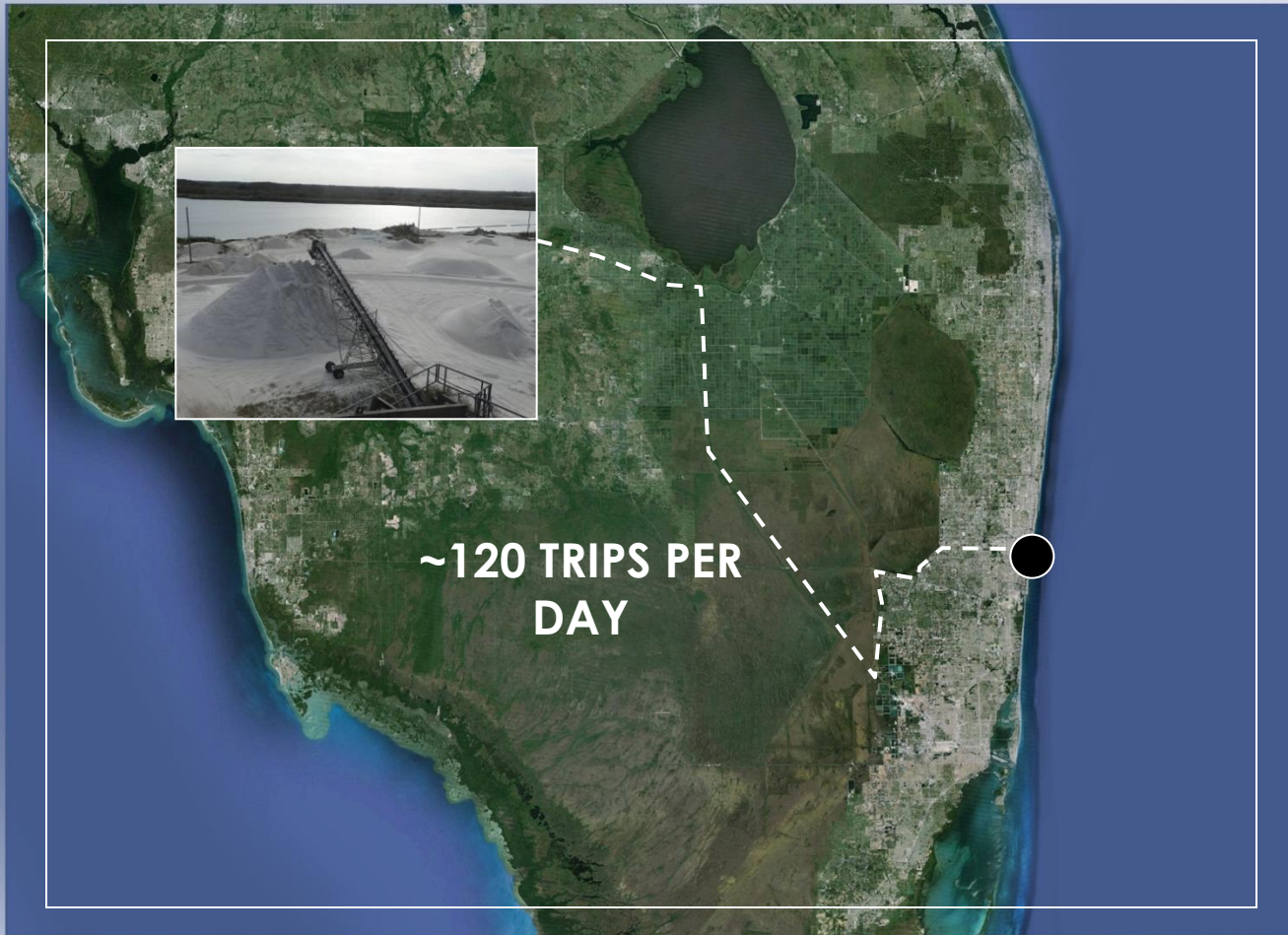
**No Permit:  
Dry Beach ONLY**



**Easements**

# April - September 2013

**CHALLENGES: DESIGN-ADVERTISE-AWARD**



**\$7.1 M AWARD TO EASTMAN AGGREGATE ENTERPRISE, LCC**



(truck haul and conveyor belt)



**BUILDING STRONG®**

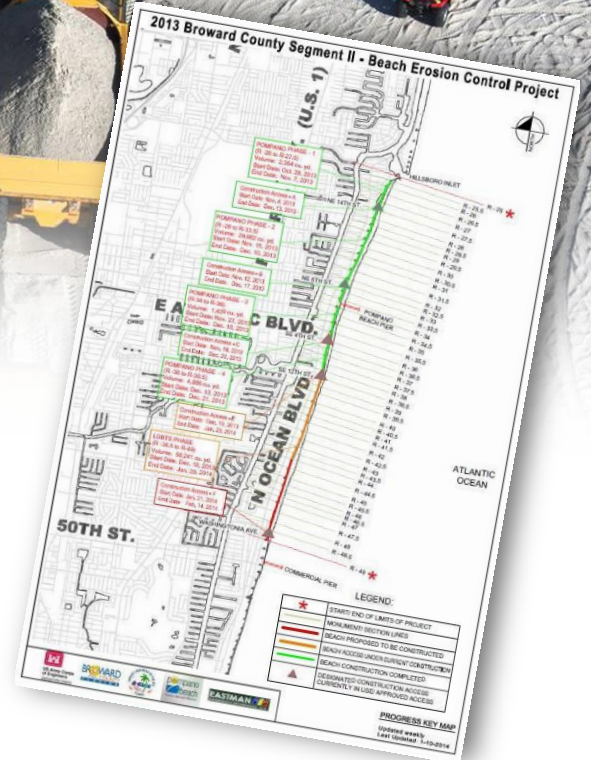




Ensuring  
Communication  
During a Project  
**WITH SO MANY  
MOVING PARTS**



Partnering Meeting



Construction Progress Map

**November 2013 - February 2014**  
**CHALLENGES: CONSTRUCTION**





**Ensuring Safety**



**Minimizing Inconveniences for Residents & Tourists**

**November 2013 - February 2014**  
**CHALLENGES: CONSTRUCTION**





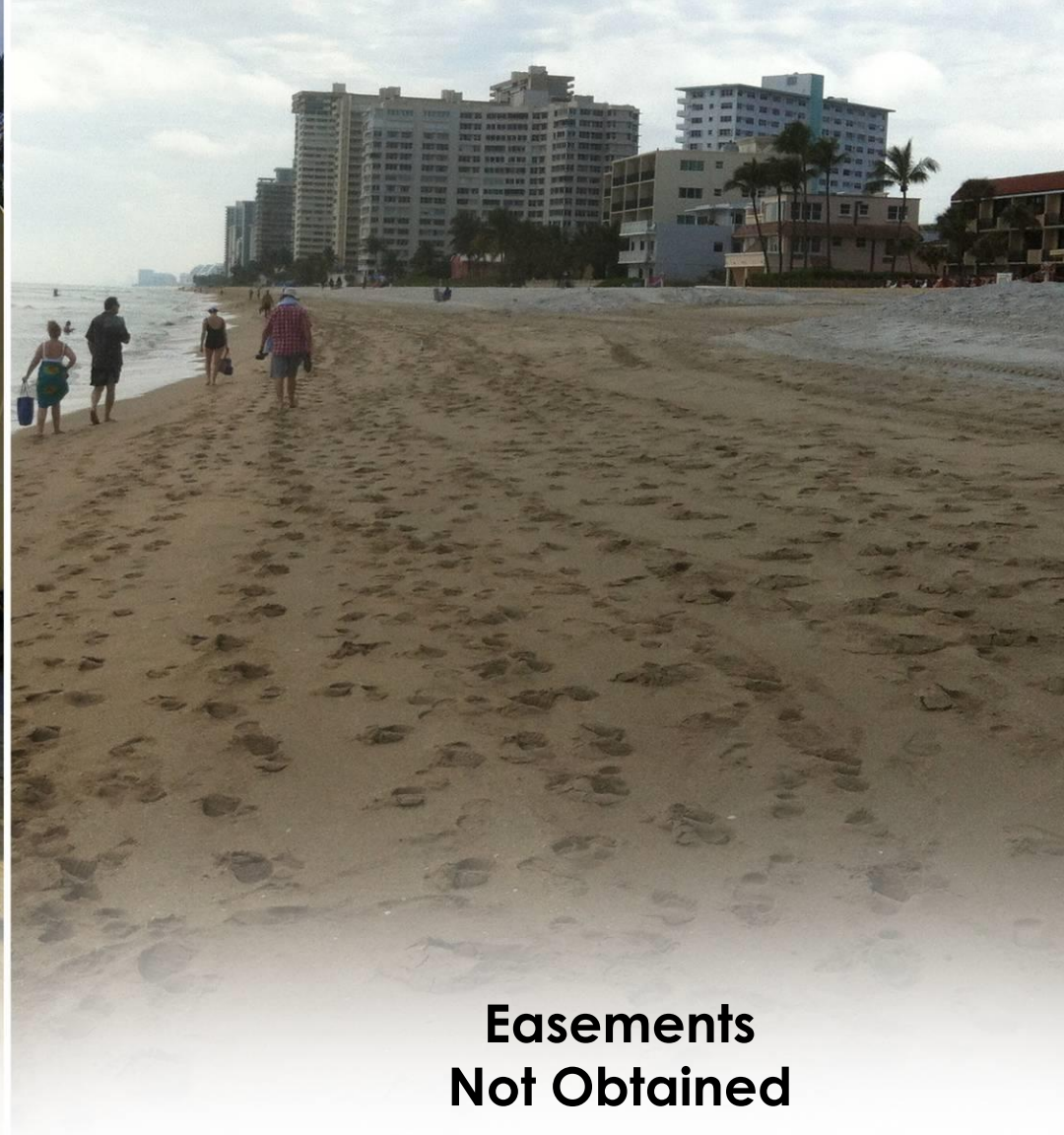
**Inclement Weather**

**November 2013 - February 2014**  
**CHALLENGES: CONSTRUCTION**





**Limited Construction  
Access**



**Easements  
Not Obtained**

**November 2013 - February 2014**

**CHALLENGES: CONSTRUCTION**





Sand and Dunes at Starlight Condominiums

November 2013 - February 2014

**CHALLENGES: CONSTRUCTION**





**Dune Destruction...**  
**IT WASN'T US**

**November 2013 - February 2014**

**CHALLENGES: CONSTRUCTION**





**Kite Surfing**



**Beachcomber Wedding**

**Life Goes On**

**November 2013 - February 2014**

**CHALLENGES: CONSTRUCTION**



An aerial photograph of a coastal city, likely Miami Beach, showing a wide sandy beach, turquoise ocean waves, and numerous high-rise apartment buildings along the shoreline. The city extends inland with more residential and commercial areas.

**DESPITE ALL THIS  
THE PROJECT FINISHED  
AHEAD OF SCHEDULE**



**BUILDING STRONG®**

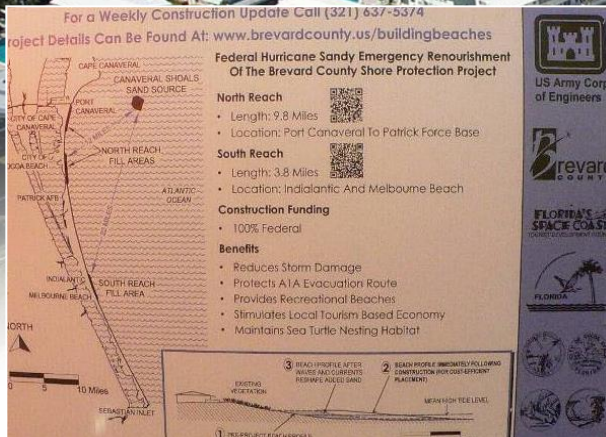




- Safety
- Communication
- Temporary inconvenience
- No documented environmental impacts
- Adaptive management

# THE KUDOS





**Employ Multiple Forms  
of Communication**



**The Sponsor is the Key  
Communicator on the  
Ground**



**Engage in Pro-active  
Communication w/Locals  
BEFORE A DISASTER**

**You Can Never Have Enough Communication**  
**THE LESSONS LEARNED**



# THANK YOU



BUILDING STRONG®