

Florida Department of Environmental Protection



Division of Water Resource Management

Environmental Windows

Danielle H. Irwin, Deputy Director

FSBPA

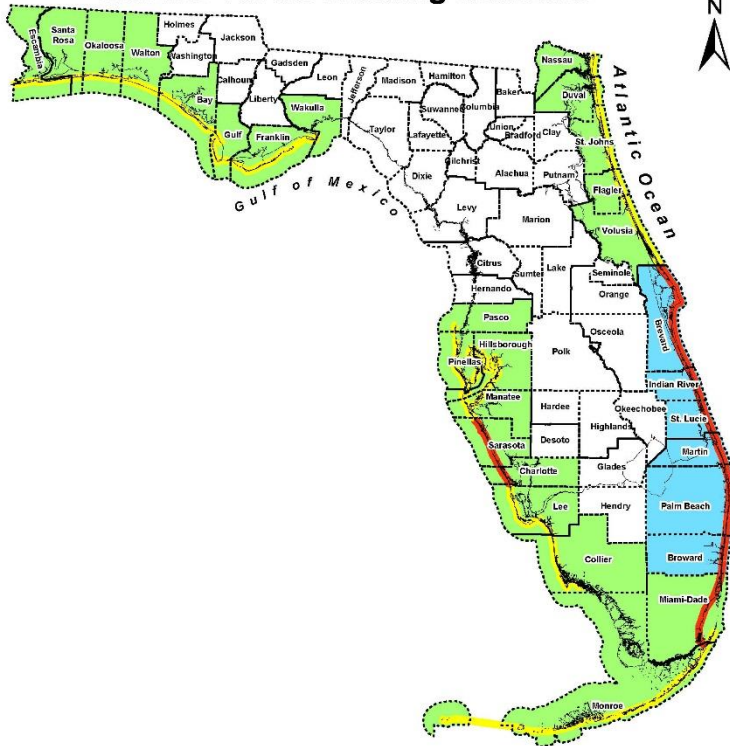
September 24, 2014





Why you can't work year-round without restrictions.

Marine Turtle Nesting Seasons



Marine Turtle Nesting Beaches

- █ High Density Nesting Beaches
- █ Nesting Beaches

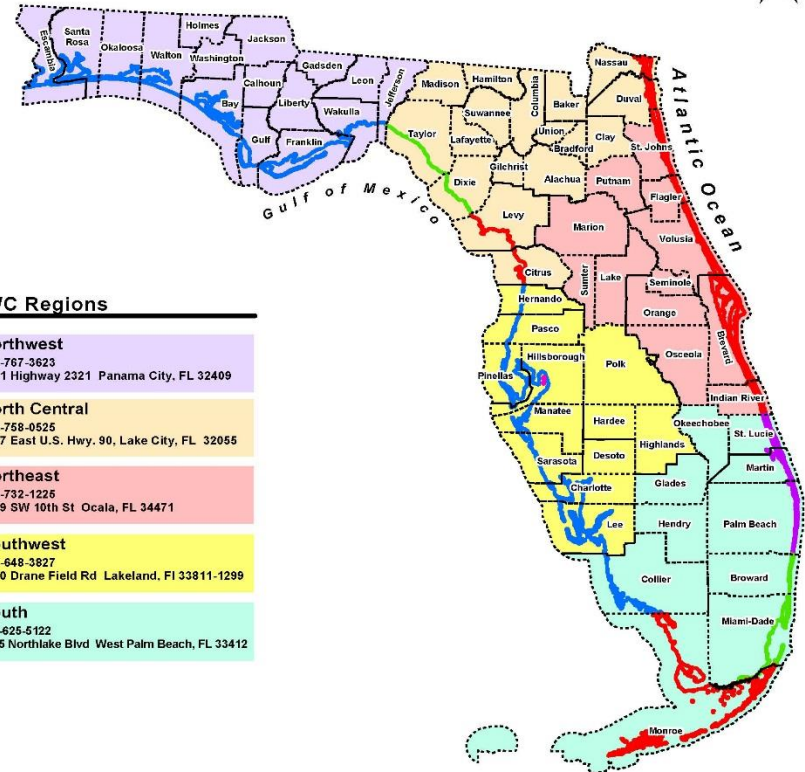
Marine Turtle Nesting Season

- █ May 1 - October 31
- █ March 1 - October 31



Florida Fish and Wildlife
Conservation Commission
Division of Habitat and Species Conservation
Imperiled Species Management Section
MyFWC.com
620 South Meridian Street, 8855A
Tallahassee, Florida 32399-1600
(850) 922-1330 Email: MarineTurtles@MyFWC.com

Shorebird Breeding Seasons and Regional Shorebird Contacts



FWC Regions

Northwest

850-767-3623
3911 Highway 2321 Panama City, FL 32409

North Central

386-758-0525
3377 East U.S. Hwy. 90, Lake City, FL 32055

Northeast

352-732-1226
1239 SW 10th St Ocala, FL 34471

Southwest

863-648-3827
3900 Drane Field Rd Lakeland, FL 33811-1299

South

561-625-5122
8535 Northlake Blvd West Palm Beach, FL 33412

Shorebird Breeding Season

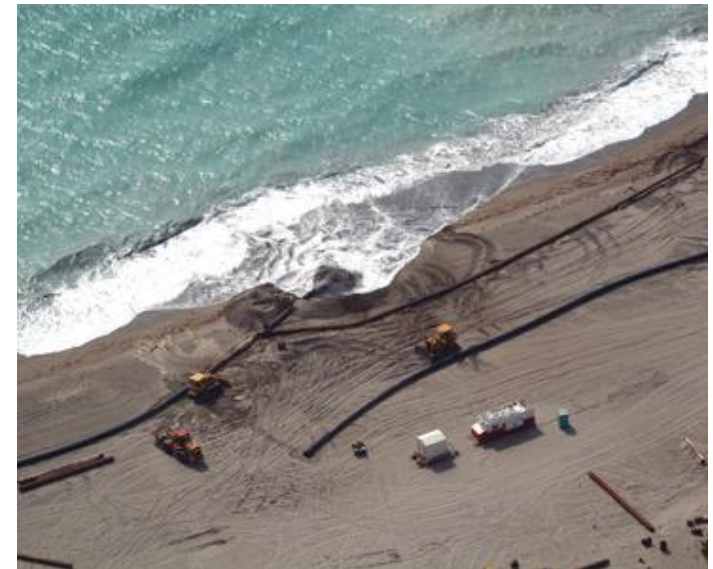
- █ February 15 - September 1
- █ Spoil Islands Hillsborough Bay March 1 - September 1
- █ March 15 - September 1
- █ April 1 - September 1
- █ Spoil Islands & Estuaries March 15 - September 1
- █ Coastal Beaches April 1 - September 1



Florida Fish and Wildlife
Conservation Commission
MyFWC.com
620 South Meridian Street
Tallahassee, Florida 32399-1600

Why can't we? Impacts can occur.

- Hopper Dredging
 - Collision
 - Crushing
 - Entrainment
- Beach Placement
 - Pipelines & shore-based equipment
 - Burial, habitat manipulation
 - Turbidity, sedimentation





Sand placement windows during periods of low nesting density.

- Brevard to Palm Beach - Nov 1- April 30
- Gulf, Franklin & Manasota Key - Oct 1 - May 31
- Everywhere else - all year round!



Maybe's

- Warmer climate
- Sea Level Rise
- New species listed
- Species recover
- Species go extinct
- New BMP's or equipment
- Streamline FWC & FWS
- Science Assessments & Data Gaps WG





I don't make these decisions!

NMFS

Dr. Roy E. Crabtree

NOAA Fisheries Service
Southeast Regional Office
263 13th Avenue South
Saint Petersburg, Florida
33701
(727) 824-5301

USFWS

Region 4 - Southeast

1875 Century Boulevard
Atlanta, GA 30345
*Assistant Regional Director
of Ecological Services:*
Leopoldo Miranda
404-679-7085



Contact

Danielle H. Irwin, PWS

Deputy Director, Division of Water

Resource Management

Florida Department of

Environmental Protection

(850) 488-7843

Danielle.Irwin@dep.state.fl.us