

Performance Metrics: Pinellas County's Beach Performance Index

**John E. Bishop, Ph.D. &
Andrew Squires**

Public Works
Environmental Management

FSBPA February 6, 2020

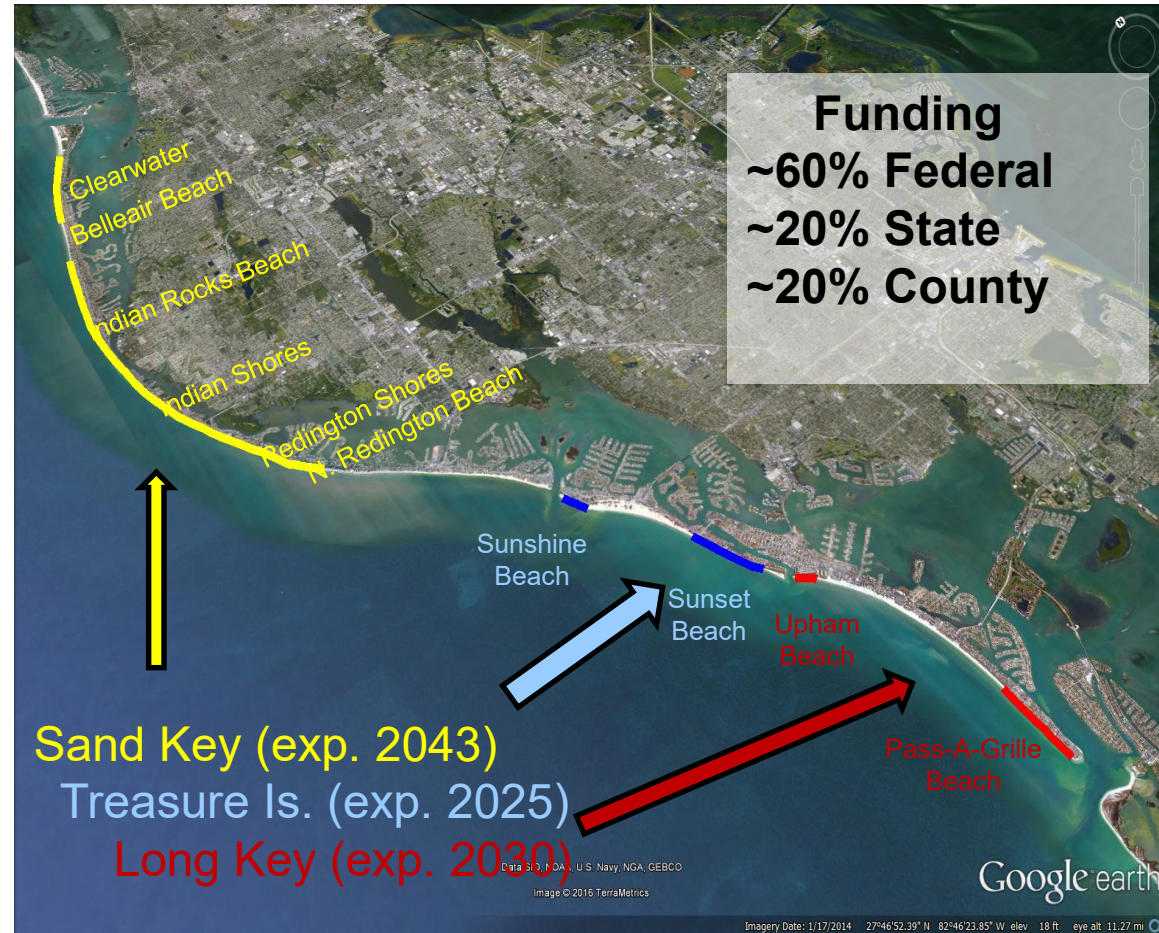


Outline

- Background
- Previous Performance Metric
- New and Improved Performance Metrics

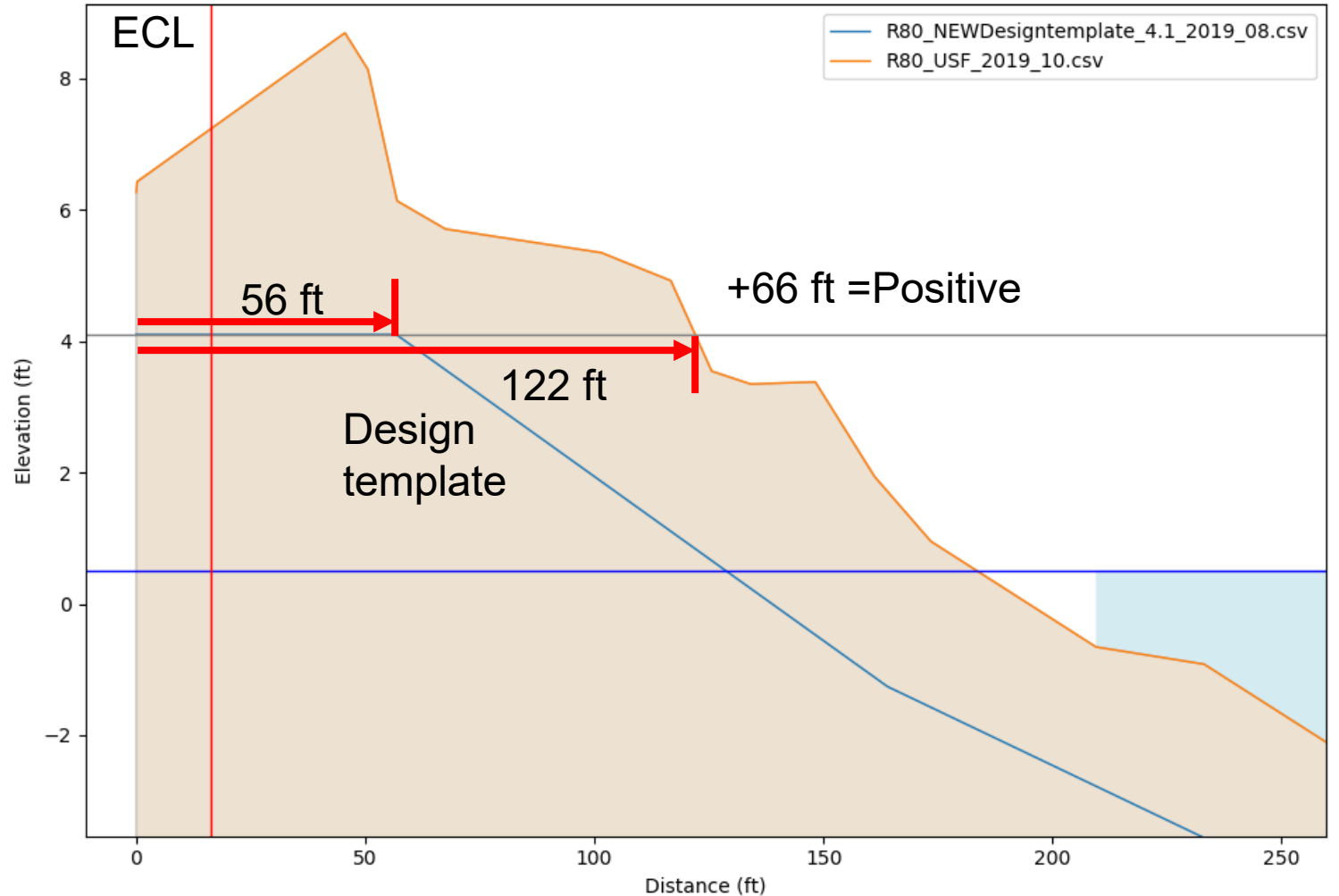
Federal Project Segments

- 35 miles of beach
- 21.4 miles critically eroded
- 12 miles are restored regularly



Previous Performance Metric

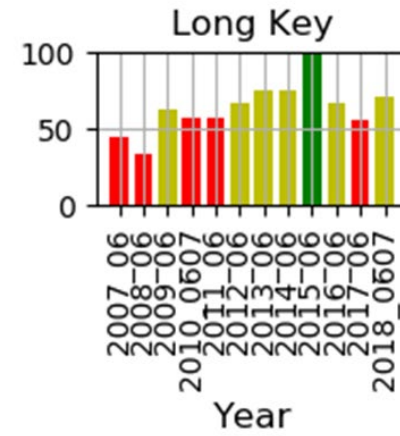
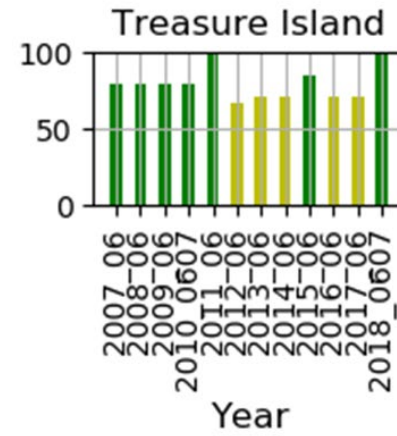
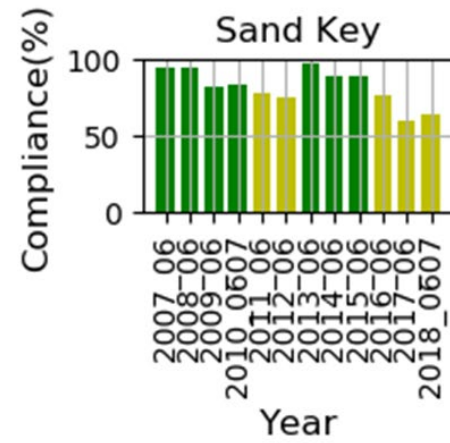
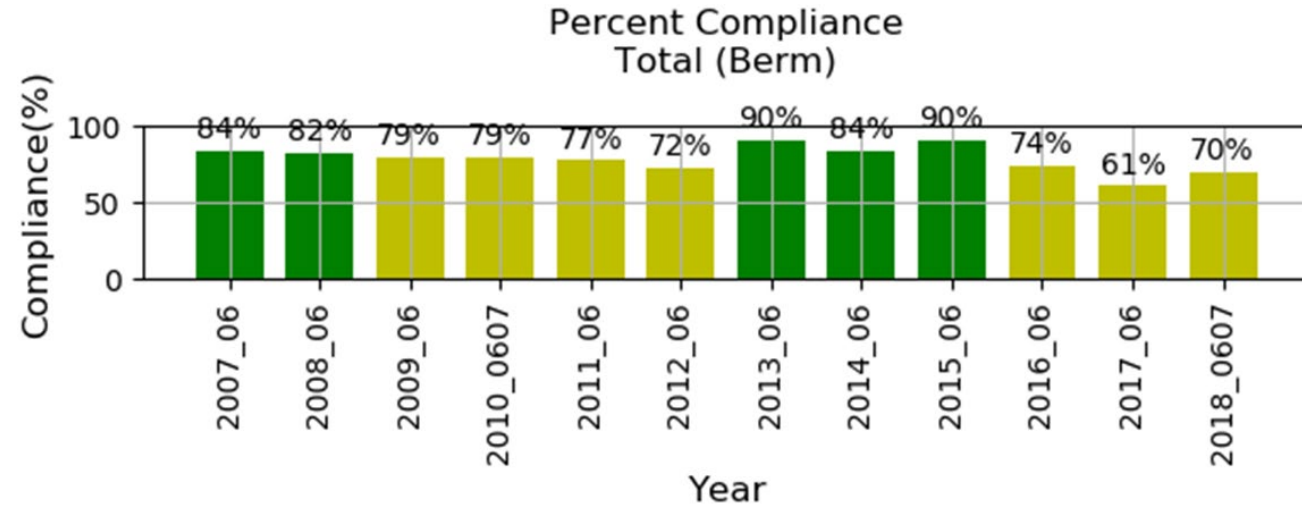
1. Search database for June profiles
2. Interpolate position of berm height (4.1 ft)
3. Calculate distance to the seaward edge of Corps design berm
4. Bin negative and positive distance by municipality
 - Positive distance means it meeting the Corps designed Berm width
 - Negative it does not



Beach Profiles

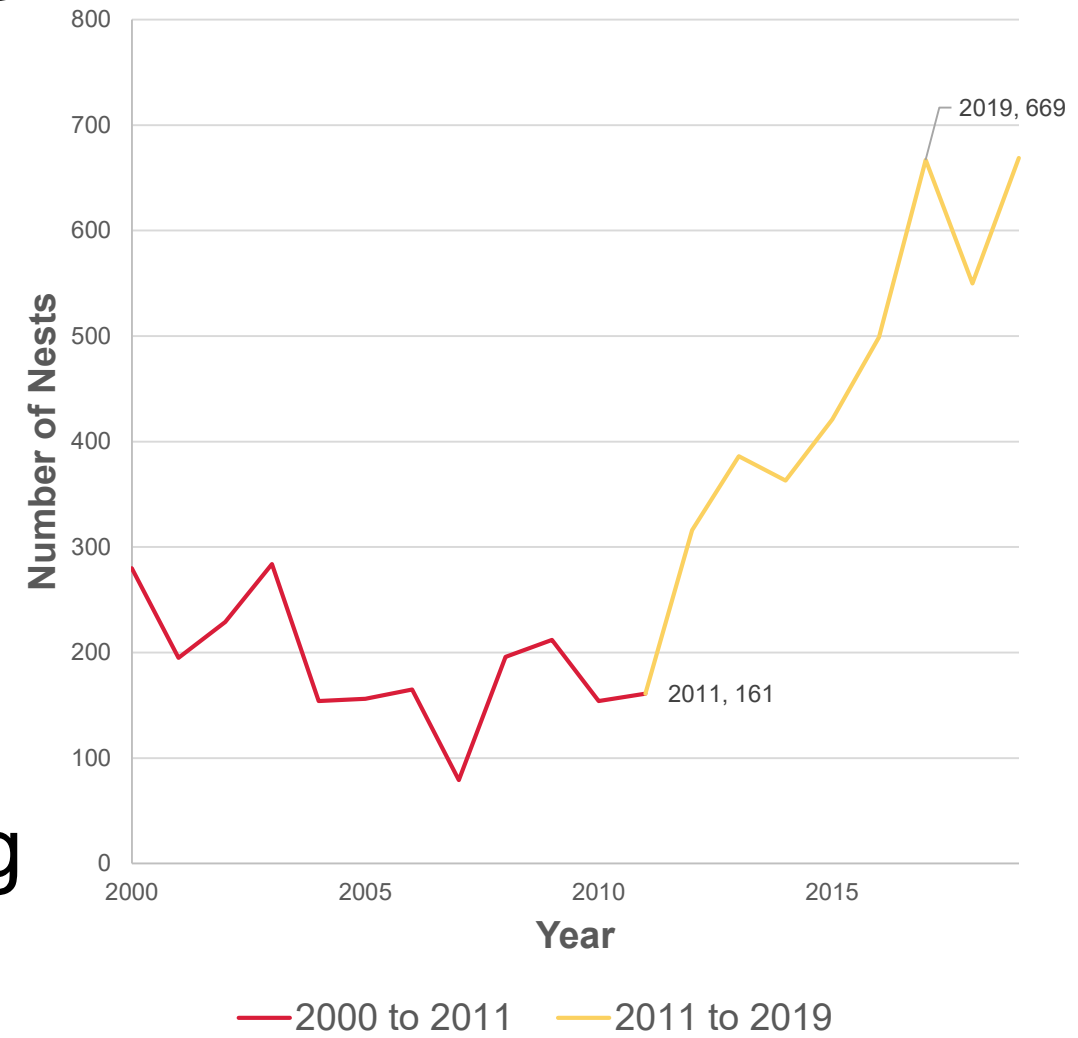


Federal Project Segments



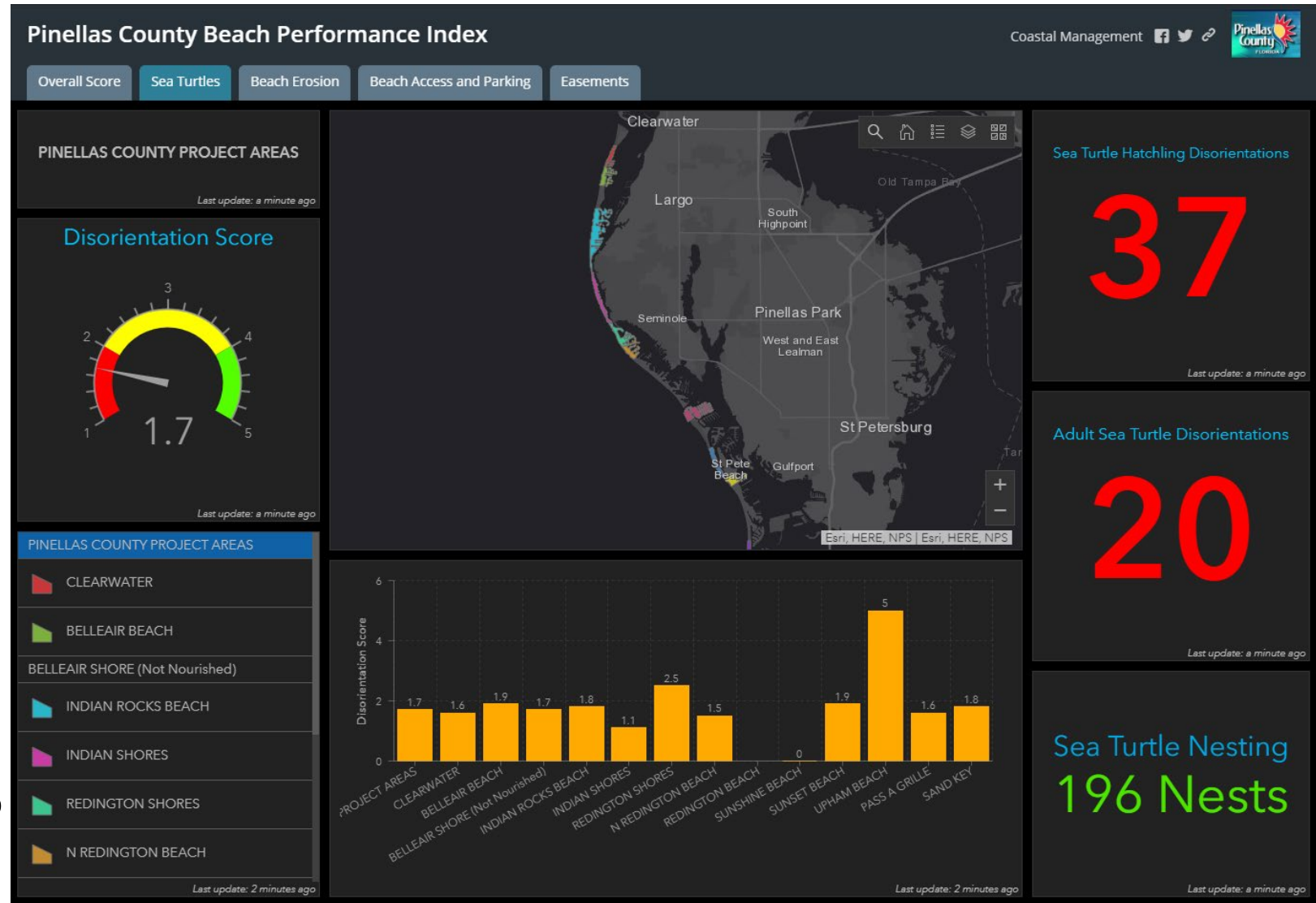
NEW Performance Metric

- 3 Parts
 - Sea turtle
 - Nest and adult disorientations
 - Erosion
 - Nourishment sand remaining
 - Beach parking and access



Sea Turtles Disorientations

- % Hatchling Disorientation
 - +5% for every adult Disorientation
- Score = 4-5
eq $\geq 0\%$ and eq $\leq 3\%$
- Score = 2-4
eq $> 3\%$ and eq $\leq 15\%$
- score = 1-2
eq $> 15\%$ and eq $\leq 100\%$



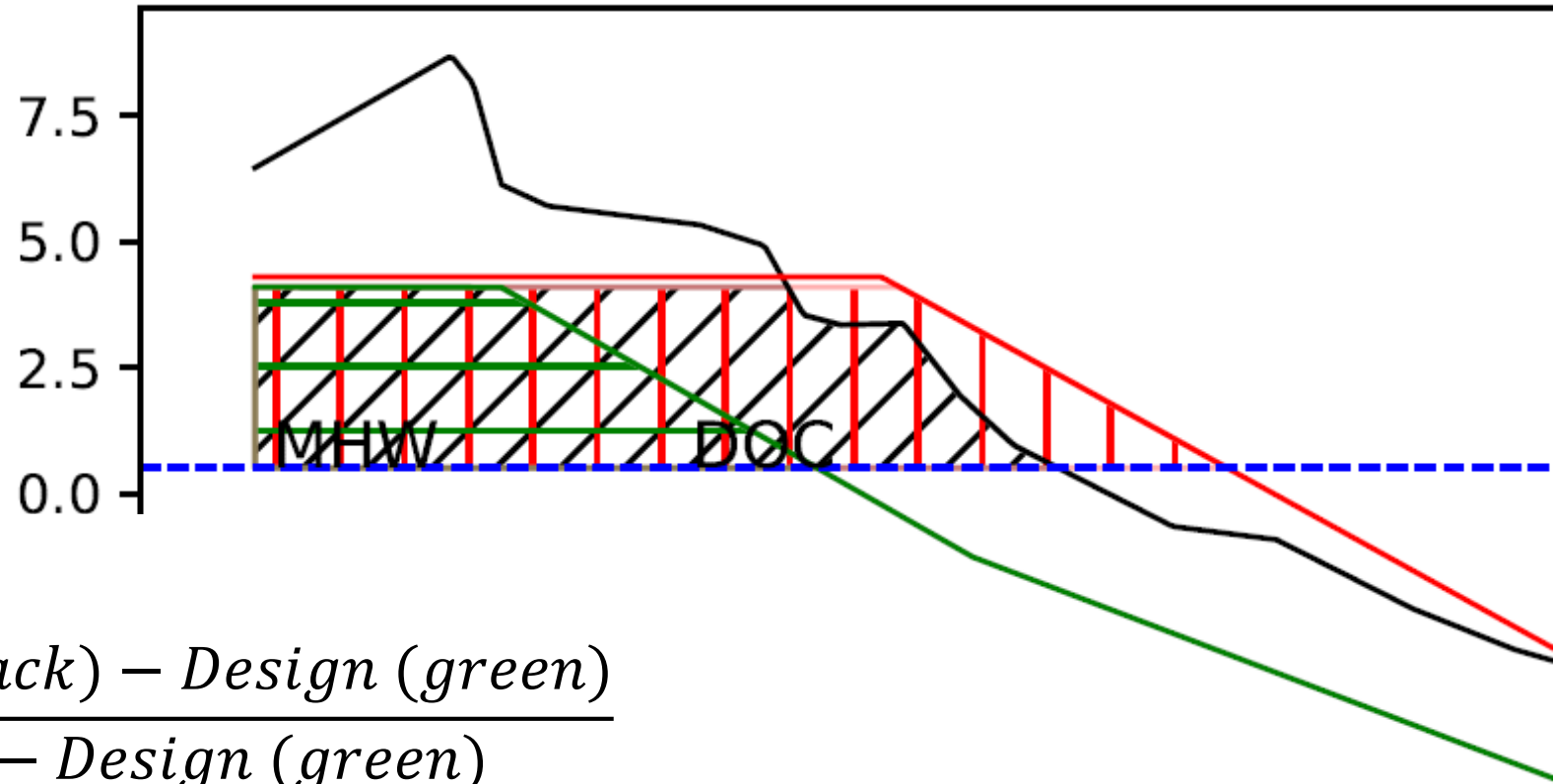
Beach Erosion

1. 4.1ft > Vol Rem. > MHW

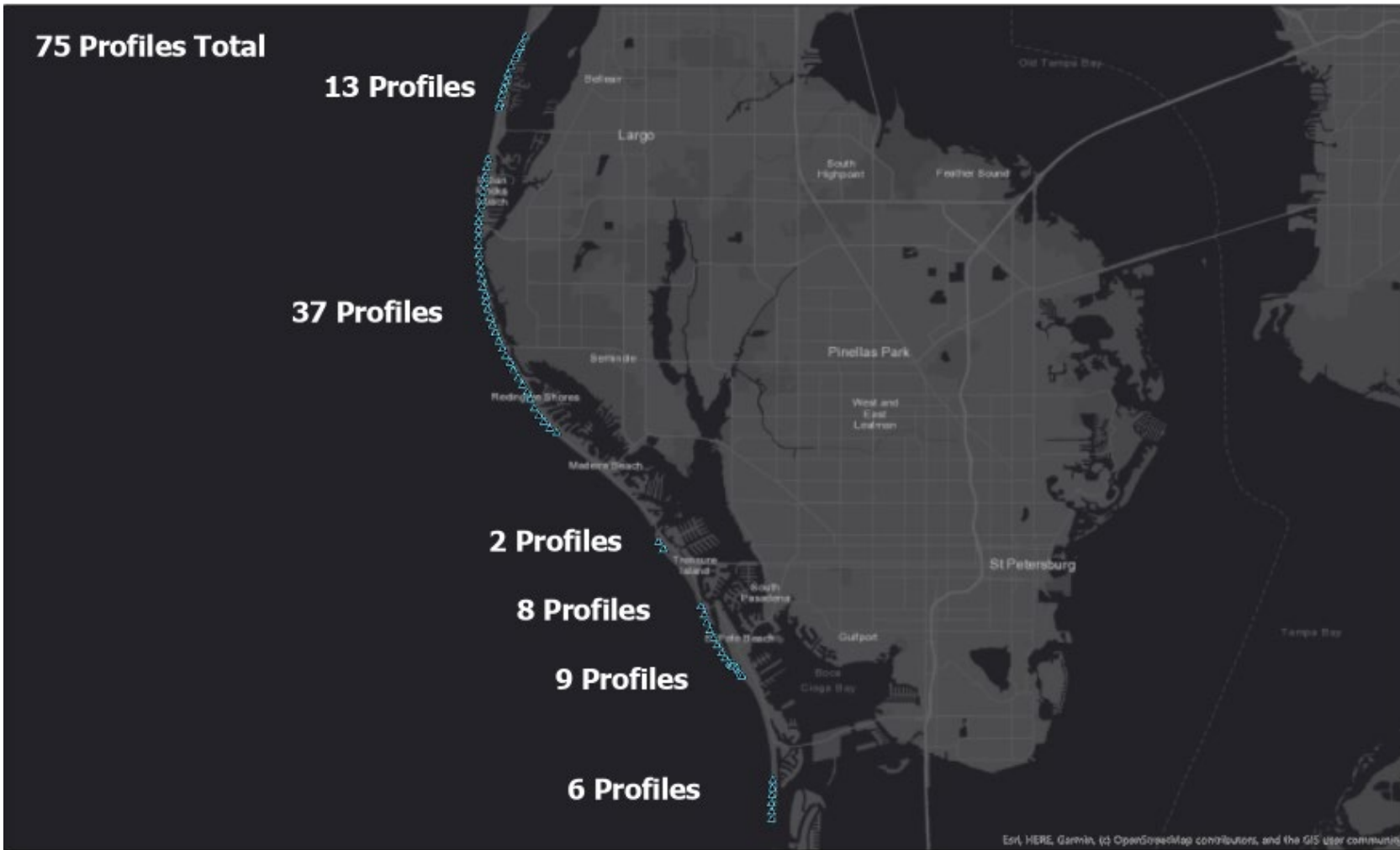
$$\text{Remaining} = \frac{\text{Prog. Survey (Black)} - \text{Design (green)}}{\text{Placed (red)} - \text{Design (green)}}$$

3. Average weighted profile distance for each City

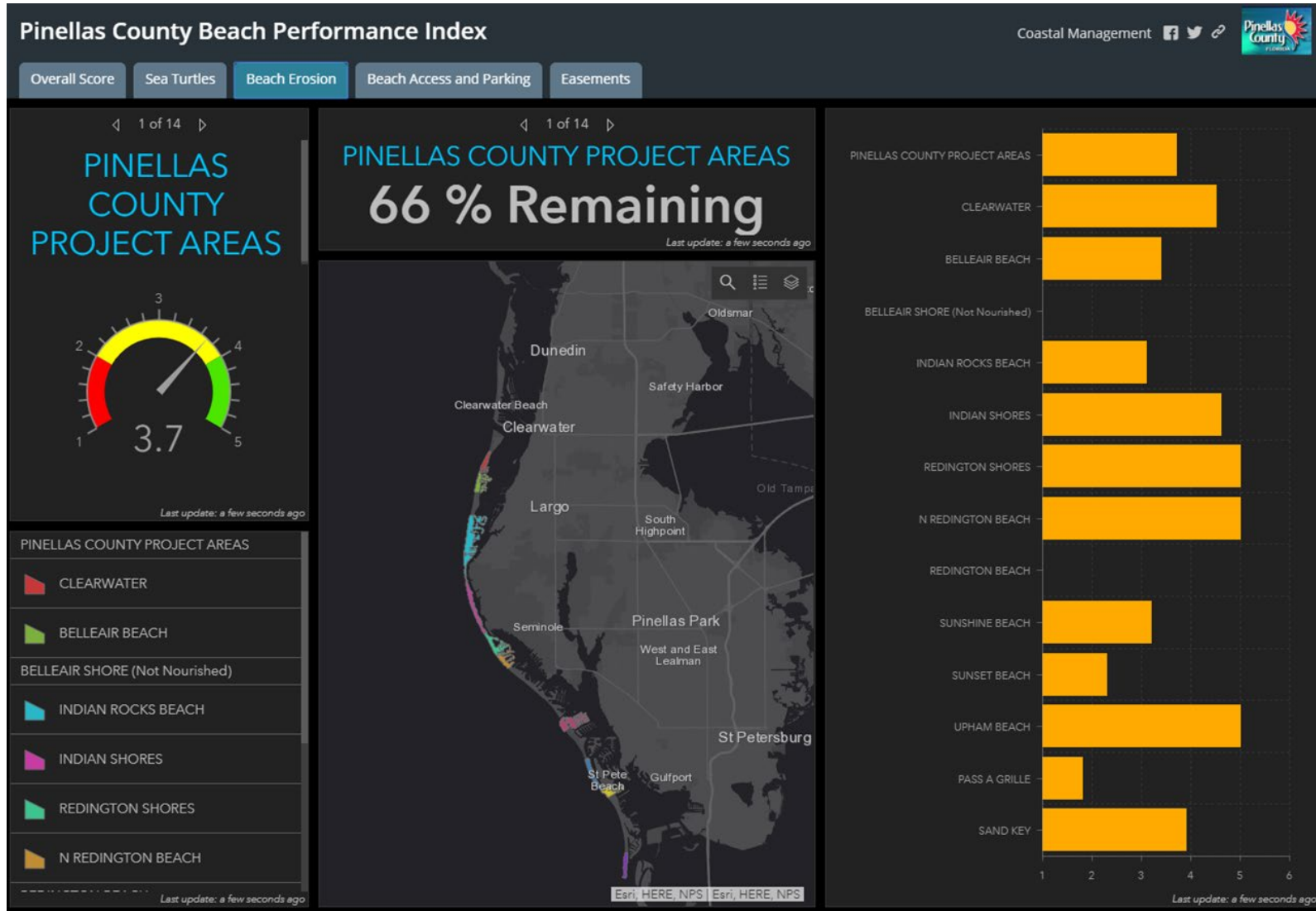
4. Score= % / 20



Beach Profiles



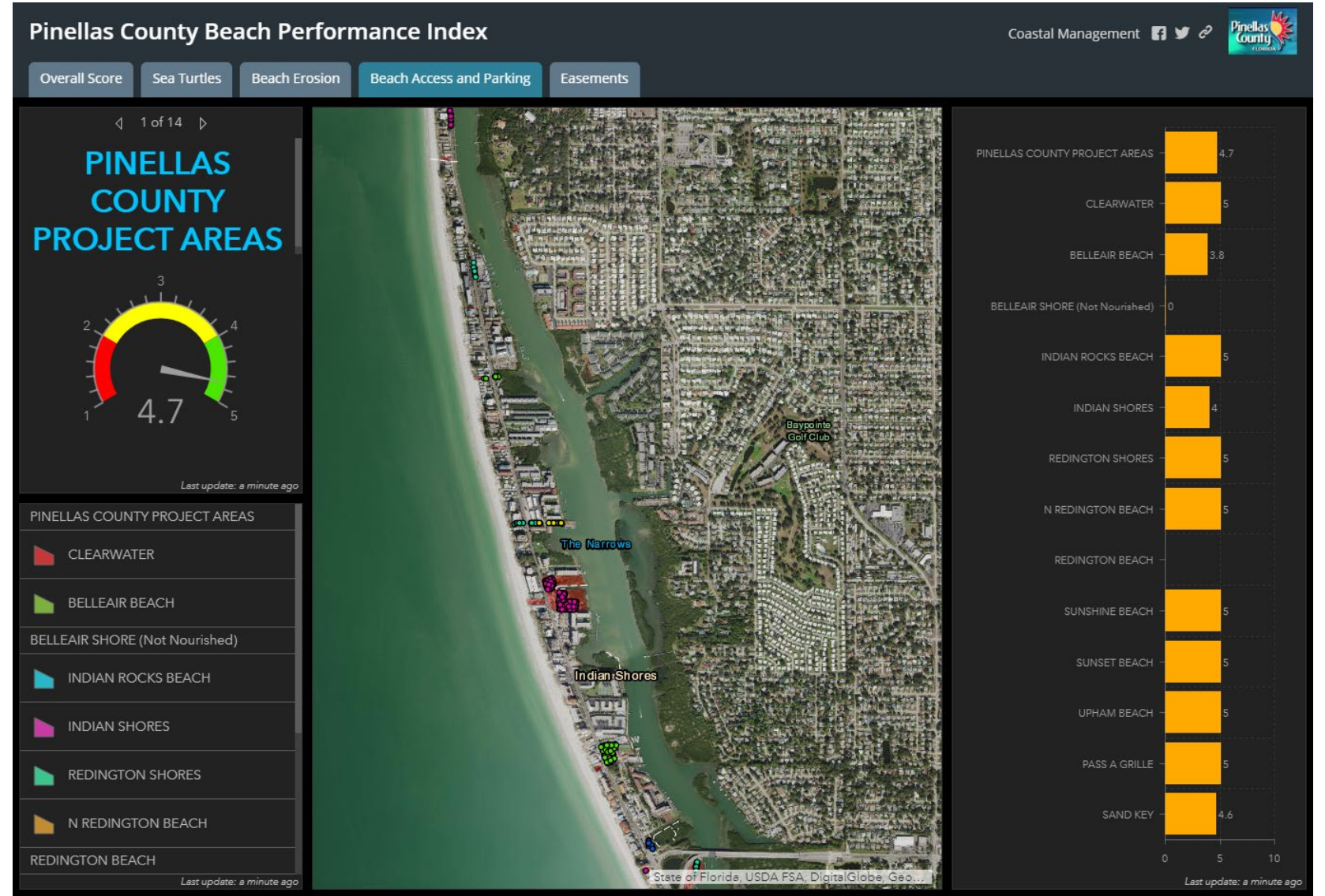
Beach Erosion



Beach Access and Parking

Followed 62B-36
except

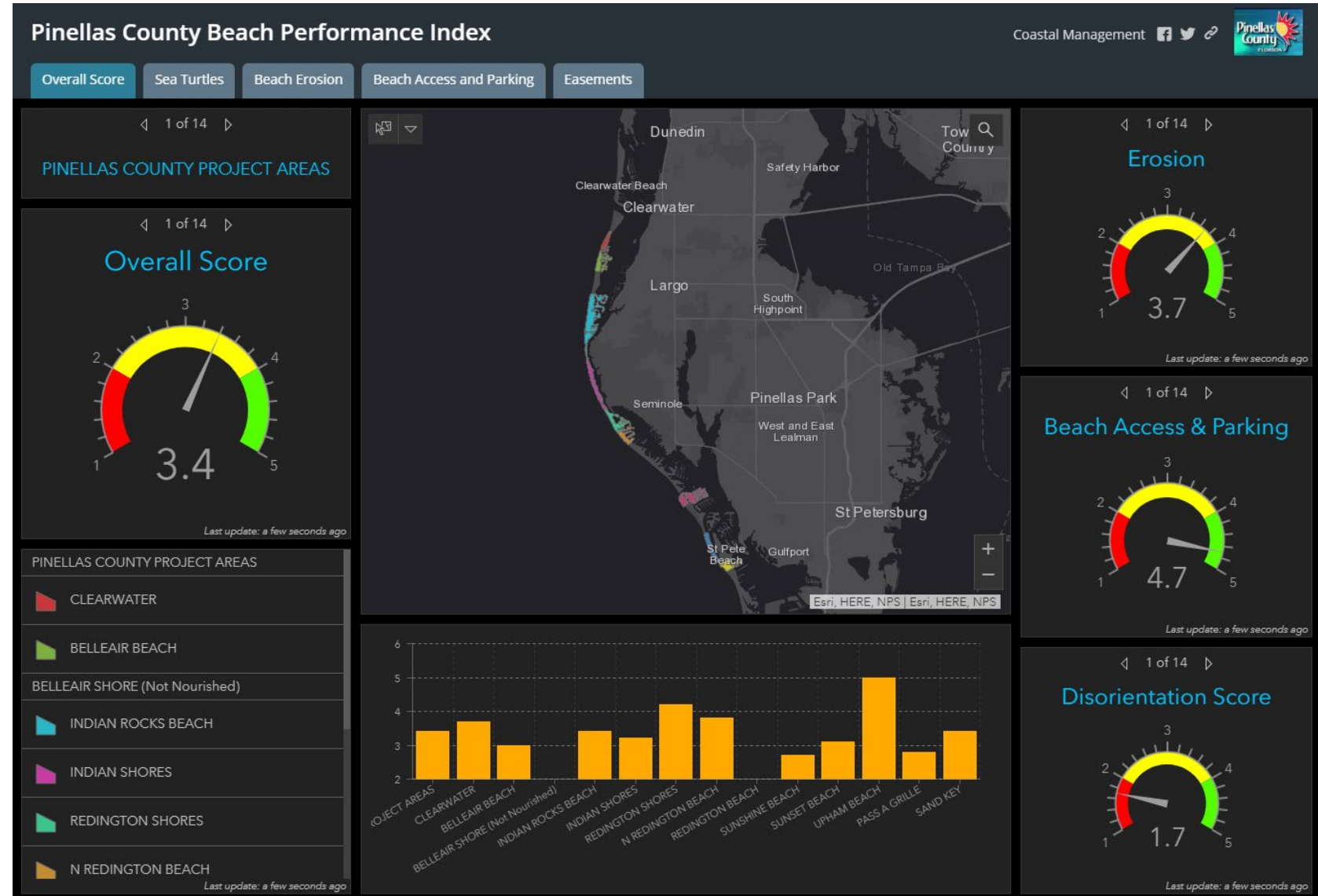
1. Only considered parking spaces
2. Not bike racks, bus stops or vacation rentals
3. Score = % / 20



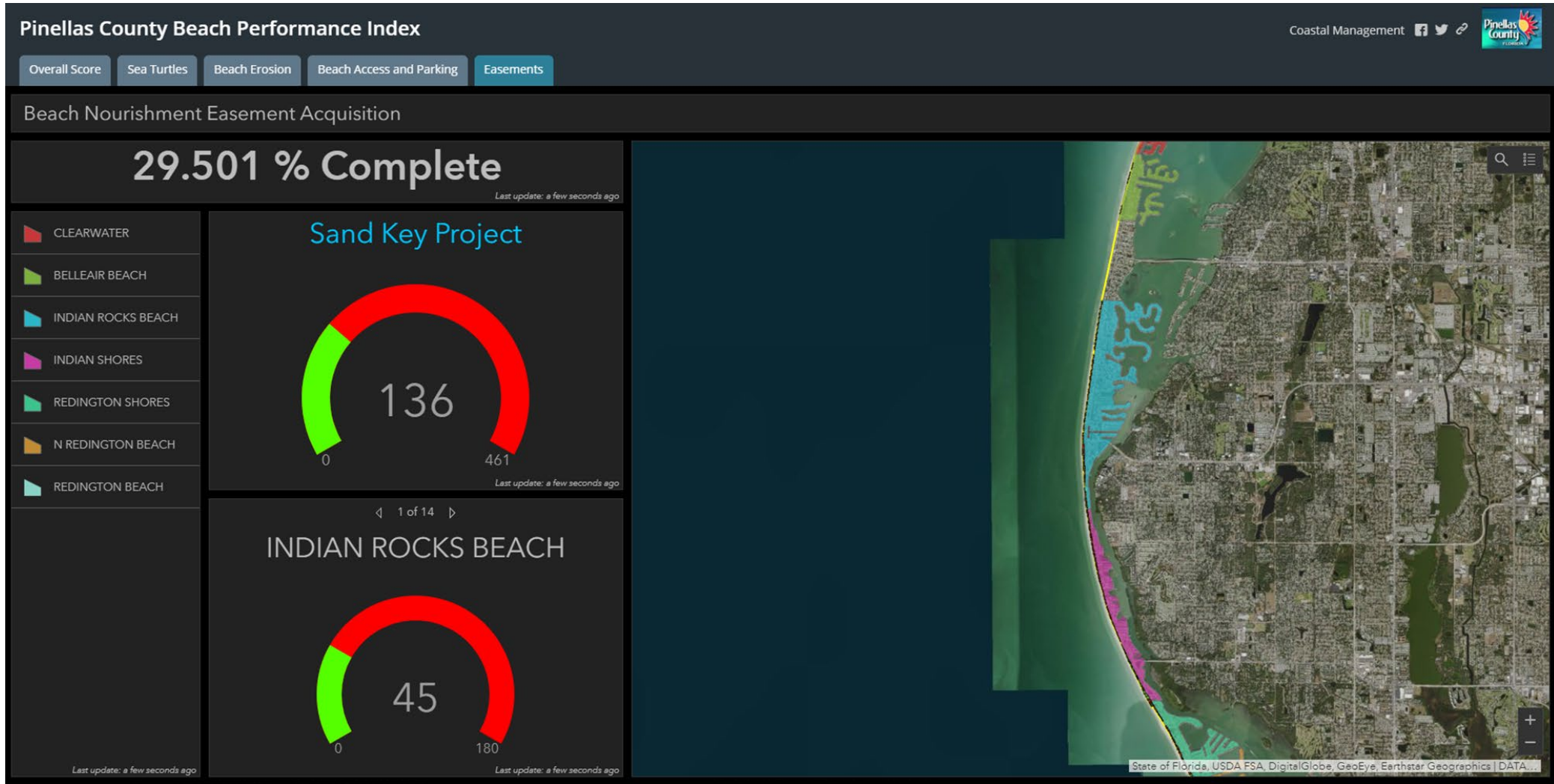
Total Score

Average of:

1. Sea Turtle Score
2. Beach Erosion Score
3. Beach Access and Parking Score



Easements



<http://pinellas-egis.maps.arcgis.com/apps/MapSeries/index.html?appid=e9caaf5523534445b80050fbac1a34ee>

Questions?

John E. Bishop, Ph.D.
Coastal Mgmt Coordinator
Pinellas County Natural Resources
22211 US Hwy. 19 N, Bldg. 10
Clearwater, FL 33765
Phone (727) 464-8766
jbishop@pinellascounty.org